



“my
Reference.”

LVT LOOSELAY

Gerflor[®]
theflooringgroup

LEADER EN SOLUTIONS PLOMBANTES DEPUIS 30 ANS

PIONEER IN LOOSELAY SOLUTIONS
FOR 30 YEARS



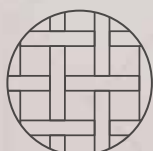
IDEAL BUREAUX & TERTIAIRE
Pose sur planchers techniques

IDEAL FOR RETAIL & OFFICES
Installation on raised access floor



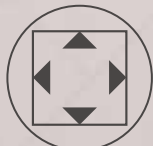
POSE FACILE & RAPIDE
Temps de gommage réduit,
sans clipsage

EASY & FAST INSTALLATION
Reduced adhesive curing time,
no interlocking



MIX & MATCH
Nombreux calepinages décors,
formats lames & dalles carrées,
LVT et moquettes

MIX & MATCH
Variety of designs,
Planks & Square Tiles formats,
LVT & carpets



PAS DE JOINT DE DILATATION
Meilleure stabilité dimensionnelle

NO EXPANSION JOINT
Best dimensional stability



100 % RECYCLABLE
Dépose facile

100 % RECYCLABLE
Easy replacement



PLINTHE DÉCOR / DESIGN SKIRTING (PVC)
6086 (& code couleur / colour code)



TAPIS D'ENTRÉE / ENTRANCE MAT
Romat GT kit 1719 (profiles included)



AVEC COLLE POISSANTE /
WITH PRESSURE SENSITIVE ADHESIVE

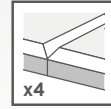


REPLACEMENT LAME OU DALLE FACILE /
EASY TO REPLACE A TILE OR PLANK

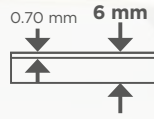
QU'EST CE QU'UNE
POSE PLOMBANTE ?
WHAT IS LOOSELAY?



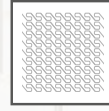
MIX & MATCH DALLES & LAMES TILES & PLANKS



CREATION 70 LOOSELAY



**Pose sur carrelage
si joint < 5mm**
Renovation on
joints up to 5mm

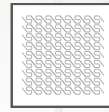


Envers gaufré
Waffle backing

CREATION 55 LOOSELAY



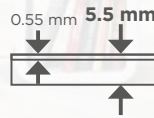
**Pose sur carrelage
si joint < 4mm**
Renovation on
joints up to 4mm



Envers gaufré
Waffle backing

Pose sans colle jusqu'à 30m²
Adhesive free up to 30m²

CREATION 55 LOOSELAY ACOUSTIC



**Pose sur carrelage
si joint < 4mm**
Renovation on
joints up to 4mm



ÉCORESPONSABLE
100% recyclable
35% matériaux recyclés



EMISSIONS TCOV
TCOV <10 micrograms
après 28 jours
Certifié Floorscore®

ECO-RESPONSIBLE
100% recyclable
35% recycled content

TVOC EMISSIONS
TVOC <10 micrograms
after 28 days
Floorscore® Certified

LA DALLE ÉCORESPONSABLE & CONFORTABLE

SUSTAINABILITY & COMFORT

IN ONE TILE!

SAGA²



U3 / U4



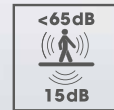
500 x 500 mm



INSTALLATION 90°



Pose sur carrelage
si joint < 5mm
*Renovation on
joints up to 5mm*



<65dB

15dB



ENVERS LIÈGE
CORK INSIDE

CONFORT SUPÉRIEUR
BETTER COMFORT



ORGANIC INSIDE:

Envers composé
à **42%** de matériaux
bio sourcés



ÉMISSIONS TCOV

TCOV < 10 micrograms/
m³ après 28 jours)
en dessous des seuils
de détection
Pas de Formaldéhyde



ÉCORESPONSABLE

100% recyclable
55% matériaux
recyclés

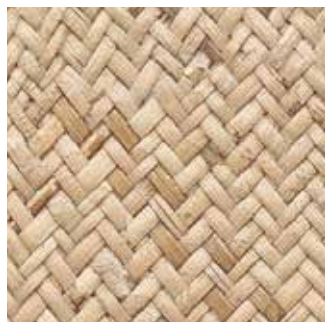
ORGANIC INSIDE:
42% of the backing
made with bio content

TVOC EMISSIONS
TVOC <10 micrograms
/m³ after 28 days
Better than norms
requirements
No formaldehyde emission

ECO-RESPONSIBLE
100% recyclable
55% recycled
content



CREATION 70 LOOSELAY



1077 Tatami Savane 600x600 mm



1082 Gentleman Peppermint 600x600 mm



1060 Pure Concrete Light 914x914 mm



1078 Tatami Raffia 600x600 mm



1080 Gentleman Garance 600x600 mm



1061 Pure Concrete Medium 914x914 mm



1079 Tatami Smoked 600x600 mm



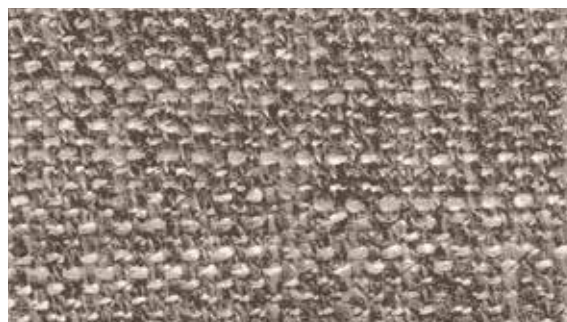
1058 Gentleman Grey 600x600 mm



1081 Gentleman Indigo 600x600 mm



1076 Gentleman Tweed 229x1220 mm



1083 Gentleman Taupe 229x1220 mm

NIVEAU DE CONTRASTE DU DÉCOR
DESIGN SHADE VARIATION:



Léger
Light

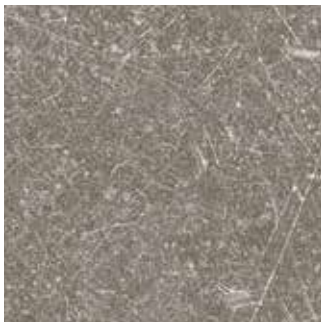


Moyen
Medium



Fort
High





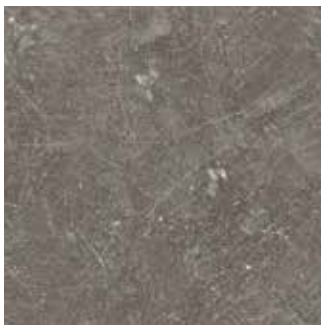
0087 Dock Taupe

914x914 mm



0356 Denim Wood

229x1220 mm



0085 Dock Grey

914x914 mm



0357 Portobello

229x1220 mm



1062 Pure Concrete Dark

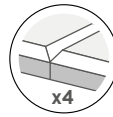
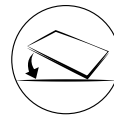
914x914 mm



0358 Moon Island

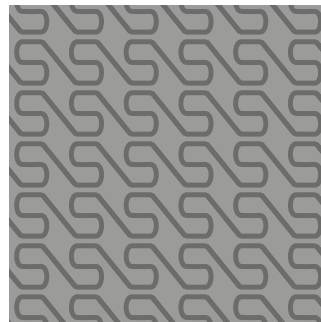
229x1220 mm





0538 Midwest

229x1220 mm



ENVERS GAUFFRÉ / WAFFLE BACKING



1054 Onka Honey

229x1220 mm



1075 Diesel Nala

229x1220 mm



1074 Diesel Burnt

229x1220 mm



Creation 70 Looselay - Diesel Burnt / Gentleman Taupe

NIVEAU DE CONTRASTE DU DÉCOR
DESIGN SHADE VARIATION:



Léger
Light



Moyen
Medium



Fort
High

CREATION 55 LOOSELAY / ACOUSTIC



0504 Twist

229x1220 mm



0060 Arena

229x1220 mm



0441 Honey Oak

229x1220 mm



0448 Malua Bay

229x1220 mm



0796 Swiss Oak Golden

229x1220 mm



0456 Ranch

229x1220 mm



0347 Ballerina

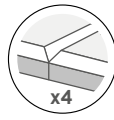
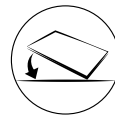
229x1220 mm



0455 Longboard

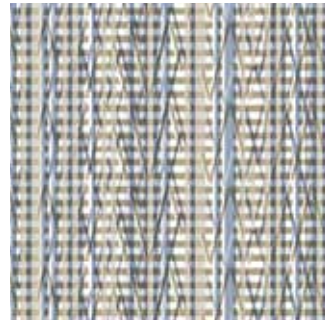
229x1220 mm





0846 Swiss Oak Pearl

229x1220 mm



0876 Ponto Cruz Navy

500x500 mm



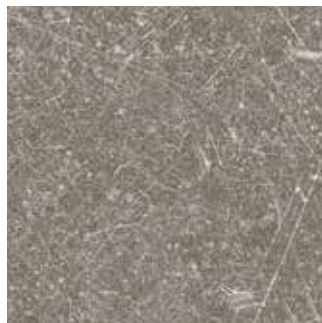
0447 Amador

229x1220 mm



0878 Ponto Cruz City

500x500 mm



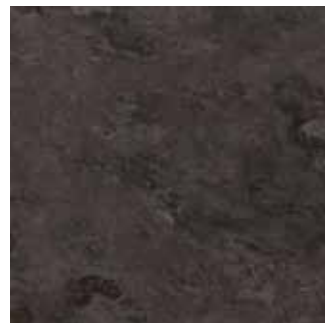
0618 Carmel

500x500 mm



0374 Parker Station

500x500 mm



0860 Norwegian Stone

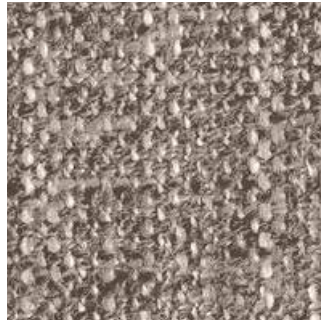
500x500 mm



SAGA²



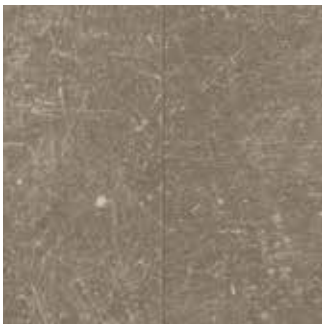
0062 Rough Textile Beige 500x500 mm



0089 Gentleman Taupe 500x500 mm



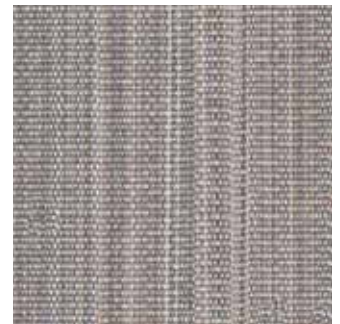
0029 Gentleman Beige 500x500 mm



0087 Dock Taupe 500x500 mm



0063 Rough Textile Grey 500x500 mm



0021 Barma Sweet 500x500 mm



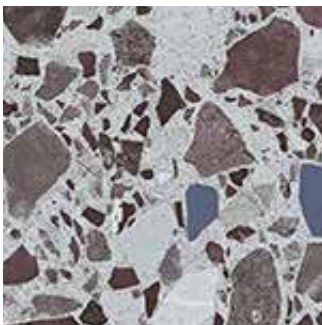
0085 Dock Grey 500x500 mm



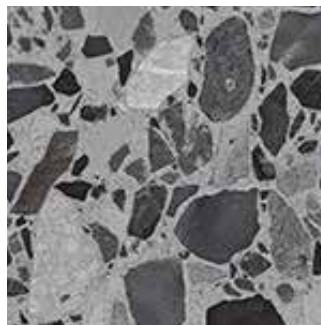
0088 Gentleman Grey 500x500 mm



0030 Gentleman Blue 500x500 mm



1089 Dalma Burgundy 500x500 mm



1088 Dalma Grey 500x500 mm



NIVEAU DE CONTRASTE DU DÉCOR
DESIGN SHADE VARIATION:



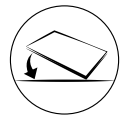
Léger
Light



Moyen
Medium



Fort
High



0028 Fiber Silver **METAL EFFECT** 500x500 mm



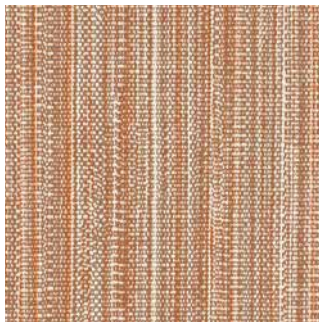
0033 Spider Beige 500x500 mm



0026 Fiber Copper **METAL EFFECT** 500x500 mm



0032 Mozaic Grey 500x500 mm



0025 Barma Beige 500x500 mm



0577 Albion 500x500 mm



0039 Spider Blue 500x500 mm



0023 Barma Mystery 500x500 mm



0579 Amarante 500x500 mm



0027 Fiber Heavy Metal **METAL EFFECT** 500x500 mm



0017 Kadina City 500x500 mm



0572 Amarante Dark 500x500 mm





LVT LOOSELAY

* information sur le niveau d'émission de substances volatiles dans l'air intérieur, présentant un risque de toxicité par inhalation, sur une échelle de classe allant de A+ (très faibles émissions) à C (fortes émissions).



CREATION 70 LOOSELAY	CREATION 55 LOOSELAY	CREATION 55 LOOSELAY ACOUSTIC	SAGA²
----------------------	----------------------	-------------------------------	-------

DESCRIPTION / BESCHREIBUNG / BESCHRIJVING / DESCRIPCIÓN / DESCRIZIONE 55 [33] 70 [43]

Épaisseur totale / Total Thickness / Gesamtdicke / Totale dikte / Espesor total / Espessura total / Spessore totale	EN ISO24346	mm	6	4.50	5.50	4.60	
Épaisseur couche d'usure / Thickness of the wearlayer / Dicke der Nutzschrift / Dikte van de slijllaag / Espesor capa de uso / Espessura camada de desgaste / Spessore strato di usura	EN ISO24340	mm	0.70	0.55	0.55	0.63	0.70
Poids / Weight / Flächengewicht / Gewicht / Peso / Peso / Peso	EN ISO 23997	g/m²	10000	7500	7600	5495	5595
Format / Size / Format / Afmetingen / Dimensiones / Dimensões / Dimensione	EN ISO 24342	mm	229 x1220	600 x 600	914 x 914	229 x1220	500x500
Nombre de lames/dalles - m² par boîte / Number of planks & tiles - m² per box	-	-	6 / 1.68 m²	4 / 1.44 m²	2 / 1.67 m²	8 / 2.23 m²	8 / 2.0 m²

CLASSIFICATION / KLASSIFIKATION / CLASSIFICATIE / CLASIFICACIONES / CLASSIFICAÇÕES / CLASSIFICAZIONI

Norme/Spécification produit / Norm/Product Specification / Produktnorm / Technische eigenschappen / Normas / Normas / Norma prodotto	-	-	EN ISO 10582	EN ISO 10582	EN 651	EN 652	
Classement européen / European Classification / Europäische Klassifizierung / Europese classificatie / Classificación europea / Classificação Europeia / Europea	EN ISO 10874	classe	34 - 43	33 - 42	33 - 42	33 - 42	34 - 42
Classement UPEEC	-	-	U4P3E2C2	U3P3E2C2	U3P3E1/2C2	U3P3E2C2	U4P3E2C2
Avis technique	-	n° AT	12/19-1786_V2	12/19-1786_V2	-	12/13-1655	
Appréciation Technique Expérimentale	-	n° ATEX			2749_V1		
Classement Feu / Fire Rating / Brandverhalten / Brand classificatie / Fuego / Fogo / Reazione al fuoco	EN 13 501-1	classe	Bfl-s1	Bfl-s1	Bfl-s1	Bfl-s1	
Potentiel de charge / Static Electrical Propensity / Begehaafading / Elektrische eigenschappen / Comportamiento electrostático / Comportamento electrostático / Resistenza elettrica	EN 1815	kV	< 2	< 2	< 2	< 2	
Glissance humide / Slip Resistance Wet / Rutschhemmung / Anti-slip / Deslizamiento húmedo / Escorregamento húmido / Scivosità umida ¹⁾	DIN 51130	classe	R10	R10	R10	R10	

PERFORMANCES / TECHNISCHE EIGENSCHAFEN / TESTRESULTAAT / CUALIDADES TÉCNICAS / PERFORMANCES / CARATTERISTICHE TECNICHE

Résistance à l'usure / Wear Resistance / Verschleißverhalten / Slijtvestheid / Abrasion / Abrasão / Resistenza all'abrasione	EN 660.2	mm³	< 2.0	< 2.0	< 2.0	< 2	
Groupe d'abrasion / Wear Group / Verschleißgruppe / Groep slijtvestheid / Grupo de abrasión / Grupo de abrasão / Gruppo di abrasione	-	-	T	T	T	T	
Teneur en agent liant / Type Binder content / Bindemittelgehalt / Conteúdo em ligante / Conteúdo em ligante	EN ISO 10582	type	I	I	I	I	
Stabilité dimensionnelle (norme) / Dimensional stability (norm) / Maßstabilität (norm) / Maatvastheid (norm) / Estabilidad Dimensional (Exigencia) / Estabilidade dimensional (normalização) / Stabilità dimensionale (requisito normativo)	EN ISO 23999	%	≤ 0.15	≤ 0.15	≤ 0.15	≤ 0.15	
Stabilité dimensionnelle (valeur moyenne mesurée) / Dimensional stability (average measured value) / Maßstabilität (Durchschnittswert) / Maatvastheid (gemeten gemiddelde waarde) / Estabilidad Dimensional (Valor medido) / Estabilidade Dimensional (Valor medio) / Stabilità dimensionale (rilevata)	-	%	≤ 0.05	≤ 0.05	≤ 0.05	-	
Poinçonnement statique rémanent / Residual Indentation / Resteindruck / Indrukbelasting / Punzonamiento / Punçoamento / Impronta	EN ISO 24343-1	mm	≤ 0.10	≤ 0.10	≤ 0.20	≤ 0.13	
Isolation acoustique bruits de chocs / Impact sound insulation / Trittschallverbesserungsmaß / Geluidsisolatie / Acústica / Isolamento acústico	EN ISO 717-2	dB	9	7	19	15	
Sonorité à la marche / Room Impact / Raumschall / Looppeluid / Rumore al calpestio / Sonoridad en la pisada / Sonoridade ao andar	NF S 31074	dB	73	73	70	< 65	
Essai de la chaise à roulettes / Castor chair test / Stuhlrollenbeanspruchung / Rolweerstand bureaustoelen / Determinación del efecto de una silla con ruedas / Resistência a cadeiras de rodas / Resistenza al passaggio di sed (Type W)	ISO 4918	-	OK	OK	OK	OK	
Conductivité thermique / Thermal Conductivity / Wärmeleitfähigkeit / Thermische weerstand / Conductividad térmica / Contutividade térmica / Resistenza termica / Varmeledningensmotstånd / Varmemotstand	EN ISO 10456	W/(m.K)	0.25	0.25	0.25	0.25	
Solidité lumière / Colour Fastness / Lichtechtheit / Lichtetheid / Resistencia a la luz / Estabilidade das cores / Solidità alla luce	EN 20 105 - B02	degré	≥ 6	≥ 6	≥ 6	≥ 6	
Traitement de surface / Surface Treatment / Oberflächenvergrüung / Oppervaktebehandling / Tratamiento de superficie / Tratamento de superficie / Trattamento di superficie	-	-	PUR+ Matt	PUR+ Matt	PUR+ Matt	Protecsol®	
Résistance aux produits chimiques / Chemical Products Resistance / Verhalten gegenüber Chemikalien / Chemische bestendigheit / Resistencia a los productos químicos / Resistência aos produtos químicos / Resistenza ai prodotti chimici ²⁾	EN ISO 26987	-	OK	OK	OK	OK	

ENVIRONNEMENT/QUALITE DE L'AIR INTERIEUR / ENVIRONMENT/INDOOR AIR QUALITY / UMWELT/RAUMLUFTQUALITÄT / MEDIO AMBIENTE/CALIDAD INTERIOR DEL AIRE INTERIOR / MEIO AMBIENTE/QUALIDADE DO AR INTERIOR

TVOC après 28 jours / TVOC after 28 days / TVOC (28 Tage) / TVOC (28 dagen) / TVOC (28 dias) / TVOC (28 dias) / TVOC (28 giorni) / TVOC (28 dagar) / TVOC (28 dager)	ISO 16000-6	micrograms / m³	< 10	< 10	< 10	< 10	
--	-------------	-----------------	------	------	------	------	--

MARQUAGE CE / CE MARKING / CE KENNZEICHNUNG / EG_CONFORMITEITSMERK / MARCA DE CONFORMIDAD CE / MARCA DE CONFORMIDADE CE / MARCATURA CE DI CONFORMITA

CE	EN 14041	-	
----	----------	---	--

- Plan incliné avec huile / Ramp test with oil / Schiefe Ebene
- Beständig gegenüber nicht färbenden alkoholhaltigen Handdesinfektionsmitteln, Haushaltschemikalien und verdünnten Säuren und Laugen bei kurzzeitiger Einwirkung.

LOOSELAY LVT, NO FORMALDEHYDE, BETTER INDOOR AIR QUALITY

<p>COMPOSITION 100% REACH Sans Phthalate (sauf matériaux recyclés) Phthalate Free (except recycled content)</p>	<p>QUALITÉ DE L'AIR INTÉRIEUR INDOOR AIR QUALITY TCOV en dessous des seuils de détection Pas de Formaldéhyde TVOC below detection level No Formaldehyde emission</p>	<p>MATÉRIAUX RECYCLÉS RECYCLED CONTENT Looselay : 35% Saga² : 55%</p>	<p>RECYCLABLE RECYCLABILITY 100%</p>	<p>BIEN ÊTRE / WELLNESS Sonorité à la marche Walking noise reduction</p>
--	--	---	--	---

IMPORTANT : Les informations contenues dans ce document sont valables à compter du : 01/01/2021 et susceptibles d'être modifiées à tout moment et sans préavis. L'évolution de la technique étant permanente, il appartient à notre clientèle avant toute mise en œuvre, de vérifier auprès de nos services que le présent document est bien celui en vigueur.

IMPORTANT : The information contained in this document is valid from 01/01/2021 and is subject to change at any time without notice. In the context of constantly changing technology, our customers are responsible, prior to any use, for checking with us that this document is the version in force.

Gerflor
theflooringgroup