



# MIPOLAM PLANET

[gerflor.com](http://gerflor.com)



# MIPOLAM PLANET

---



**Recycled content 25%**

**100% Recyclable**

Contenu recyclé : 25%  
100% recyclable



**Bio content 17%**

(Mipolam BioPlanet - on demand)

Contenu bio-sourcé 17%  
(Mipolam BioPlanet - sur commande)



**Anti-viral activity & Anti-bacterial activity**  
**Indoor air quality: TVOC 100 times below standard**

Activité anti-bactérienne et anti-virale  
Qualité de l'Air : TCOV 100 fois inférieur à la norme.

## WE CARE | WE ACT.

Our Commitments for a Sustainable future



**Bright and subtle non directional design**

Décor non directionnel, lumineux et subtil



**Heavy traffic resistance**

Résistance au trafic intense



**Ease of maintenance thanks to Evercare™**

Facilité d'entretien grâce à Evercare™



**1 product, 3 solutions (R10/EL7/EL5)**

1 produit, 3 solutions (R10/EL7/EL5)



**Roll 2 x 20ml** - Tiles 608x608mm on demand

Rouleaux 2 x 20 ml - Dalles 608x608mm sur demande



**An exclusive and Gerflor patented surface treatment.**  
*Traitement de surface exclusif breveté Gerflor.*



**Stain shield**  
*Bouclier anti-taches*



**No wax for life**  
**Water and detergent savings**  
*Pas de métallisation nécessaire*  
*Économie d'eau et de détergent*



**Matt effect: enhanced design**  
*Effet mat : pour sublimer le décor*



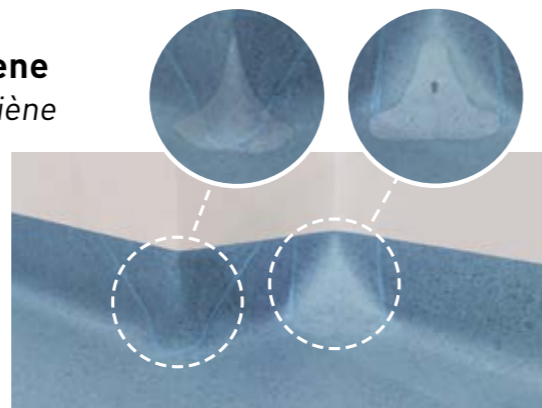
**Anti-bacterial & anti-viral activity**  
*Activité anti-bactérienne et anti-virale*  
 ISO 22196 & ISO 21702

## CLEAN CORNER SYSTEM

**An innovative corner system serving hygiene**  
*Un système d'angle innovant, au service de l'hygiène*



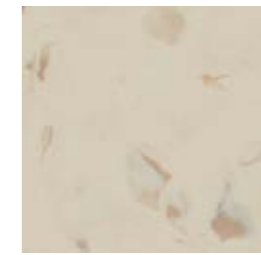
SUITABLE FOR ALL GERFLOR VINYL FLOORS  
 Clean Corner System enables to treat corners to meet all healthcare & industry requirements.



ADAPTÉ AUX SOLS PVC GERFLOR  
 Le Clean Corner System permet de traiter les angles pour répondre aux exigences des secteurs de la santé et de l'industrie.

# MIPOLAM PLANET

**5 FLOORING SOLUTIONS**  
*5 solutions pour toutes les applications*



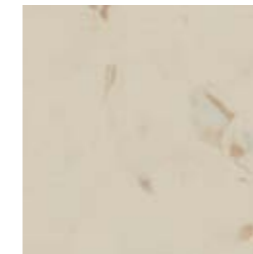
**MIPOLAM PLANET R10**  
**40 designs**  
*on demand\* / sur commande\**



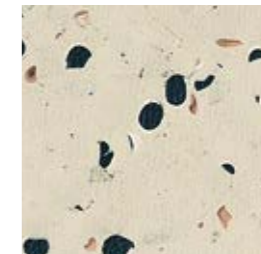
**MIPOLAM PLANET**  
**40 designs**  
*on stock / en stock*  
*on demand\* / sur commande\**



**MIPOLAM EL7**  
**Dissipative / Dissipateur**  
**10 designs**  
*on stock / en stock*  
*on demand\* / sur commande\**



**MIPOLAM BIOPLANET**  
**Bio content / Contenu bio-sourcé**  
**40 designs**  
*on demand\* / sur commande\**



**MIPOLAM EL5**  
**Conductive / Conducteur**  
**6 designs**  
*on stock / en stock*

*\*MOQ 500sqm / 500m<sup>2</sup> minimum*

**More than a floor... Floor, wall & Finishes**  
*Plus qu'un sol... Solutions complètes, sols, murs & finitions*



- 1** 2m width roll  
*Rouleau 2 m de large*
- 2** Hot welding  
*Cordon de soudure*
- 3** Coving  
*Remontée en plinthe*
- 4** Flexible wall covering or rigid wall protection  
*Mural souple et protection murale rigide*
- 5** Handrails  
*Mains courantes*
- 6** Entry mat  
*Tapis d'entrée*

*Images & pictures have been reproduced as faithfully as printing technology permits / Images & photos non contractuelles*

# MIPOLAM PLANET



Evercare™



**5432 Sun Stone**  
NCS: 1030-Y20R / LRV: 57.7 EL7



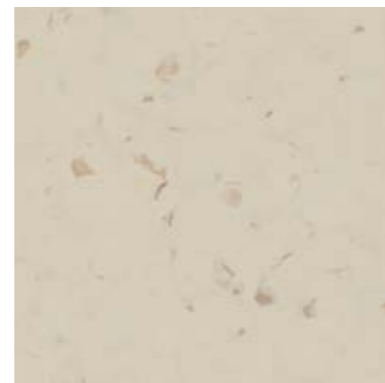
**5403 Moon Dust**  
NCS: 1002-Y50R / LRV: 72.2 EL7



**5422 Sunflower**  
NCS: 2050-Y10R / LRV: 46.5



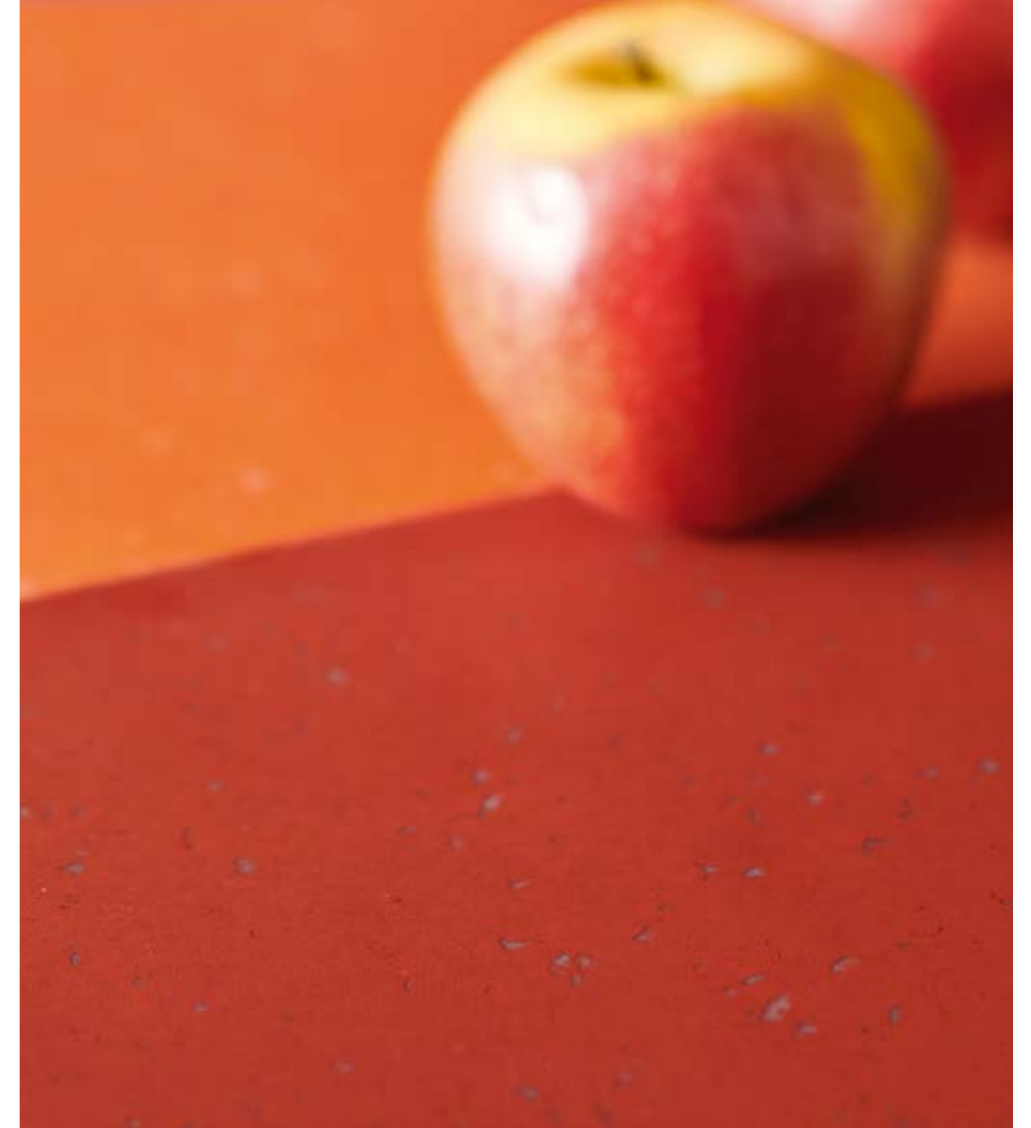
**5402 Ivory Dust**  
NCS: 1005-Y30R / LRV: 68.2



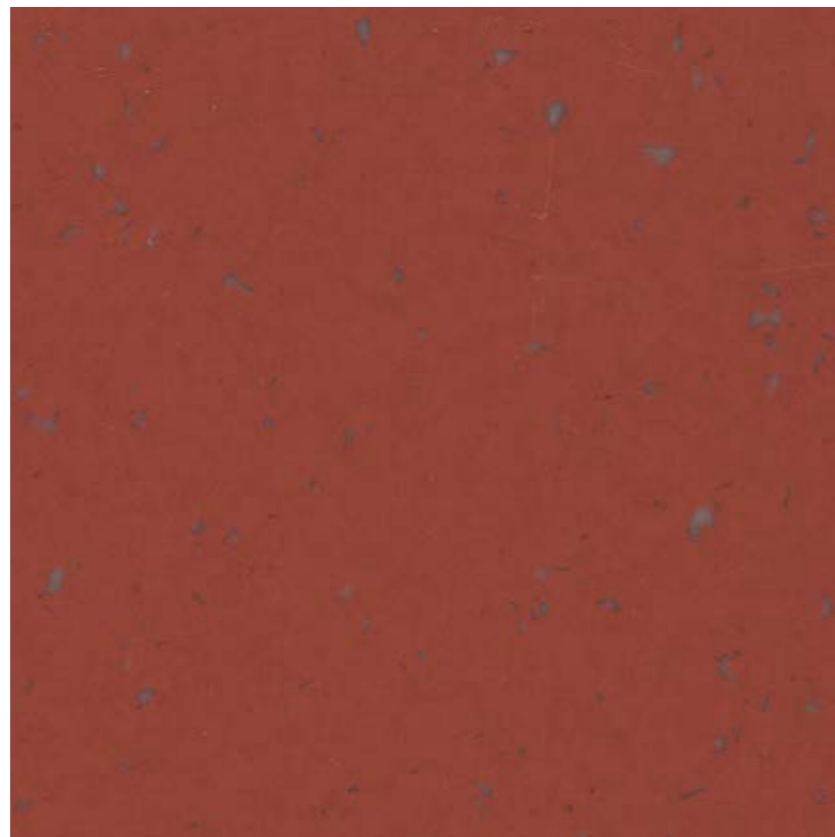
**5424 Hawk Eye**  
NCS: 2005-Y40R / LRV: 54 EL7



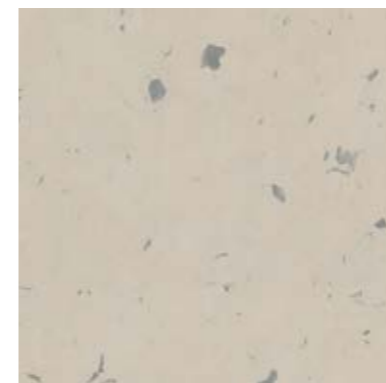
**5404 Vanilla Sky**  
NCS: 2005-Y30R / LRV: 53 EL5



**5455 Lava Flow**  
NCS: 3050-Y70R / LRV: 17.5



**5475 Intense Ruby**  
NCS: 5030-Y80R / LRV: 9.8



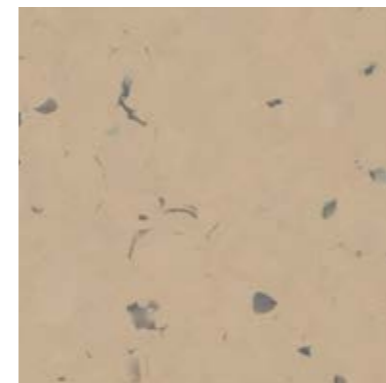
**5441 Clay Soil**  
NCS: 3005-Y50R / LRV: 42.2



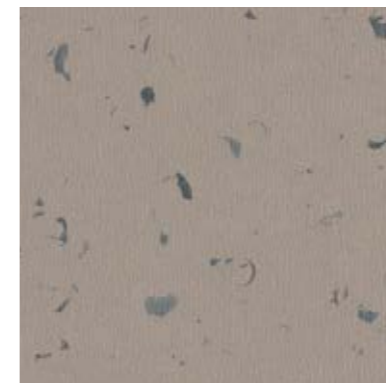
**5444 Rocky Hill**  
NCS: 6000-N / LRV: 16.1



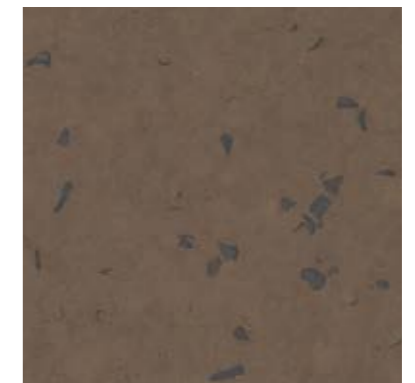
**5412 Moon Stone**  
NCS: 2002-Y50R / LRV: 52.3 EL7



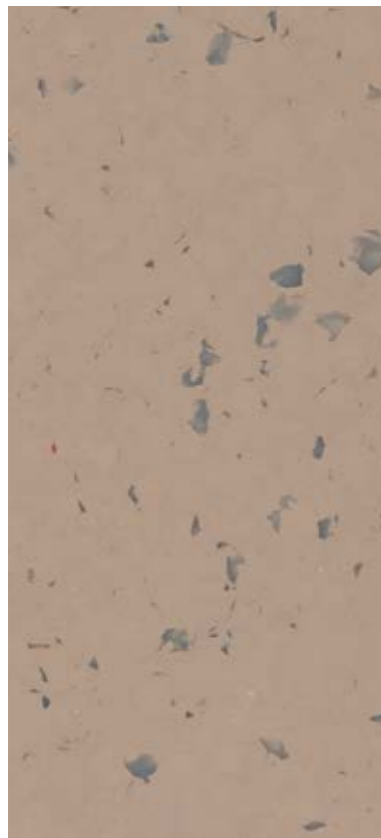
**5428 Shedded Ground**  
NCS: 3010-Y40R / LRV: 35.4



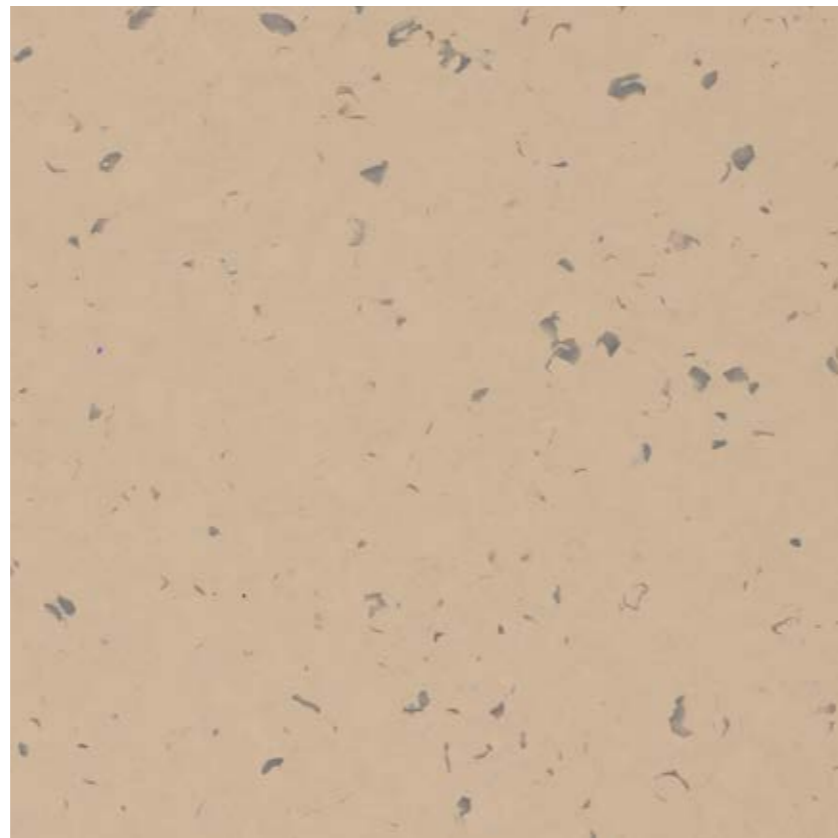
**5443 Wood Path**  
NCS: 5005-Y50R / LRV: 25.2



**5445 Tree Bark**  
NCS: 6010-Y50R / LRV: 11.5 EL7



**5438 Andalusite**  
NCS: 4010-Y50R / LRV: 29.4



**5418 Terra Nera**  
NCS: 3010-Y40R / LRV: 38.2



EL7

Colour also available as  
*Couleur aussi disponible en*  
**MIPOLAM EL7**

EL5

Colour also available as  
*Couleur aussi disponible en*  
**MIPOLAM EL5**

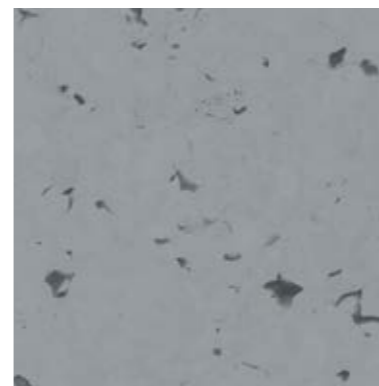


INTERIOR DESIGNER

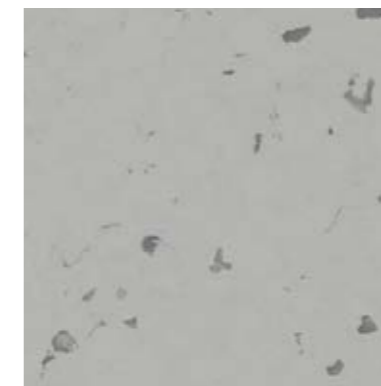


interiordesigner.gerflor.com

SAMPLE ÉCHANTILLONS



**5430 Sideral Grey**  
NCS: 4502-B / LRV: 27.2

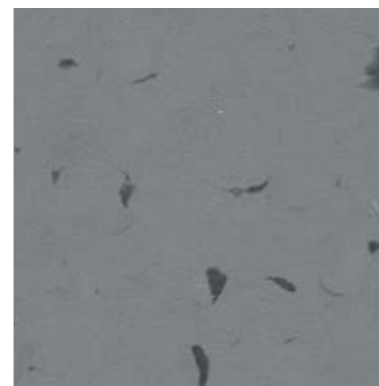


**5439 Moon Way**  
NCS: 3502-R / LRV: 37



**5420 Stone Powder**  
NCS: 3010-R70B / LRV: 36.4

EL7

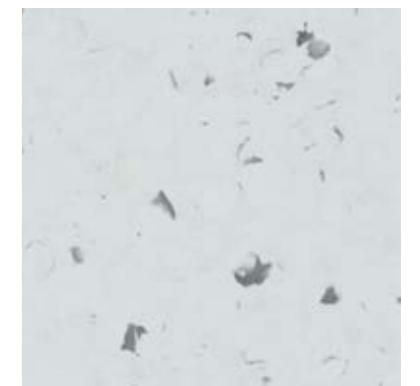


**5450 Blended Ashes**  
NCS: 5502-B / LRV: 20.1



**5413 Rain Fall**  
NCS: 2010-R70B / LRV: 49.5

EL7



**5410 Silix**  
NCS: 1502-B / LRV: 60.9

EL5

LRV: Light Reflectance Value

Toutes les références sont disponibles en rouleaux "compact" ◆ Dalles "compact" (608x608 mm) disponibles pour un minimum de commande de 500 m<sup>2</sup>

# MIPOLAM PLANET



Compact  
2m



Heavy  
traffic

Evercare™

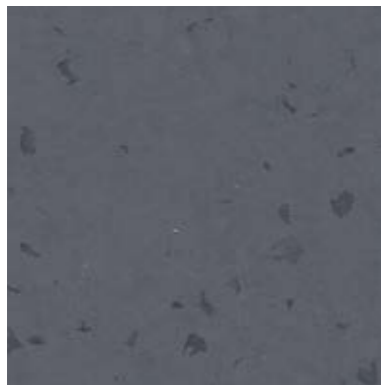


Matt effect



**5429 Fog Patch**  
NCS: 3005-R80B / LRV: 35.9

EL5



**5459 Stormy Cloud**  
NCS: 7005-R50B / LRV: 10.4

EL7

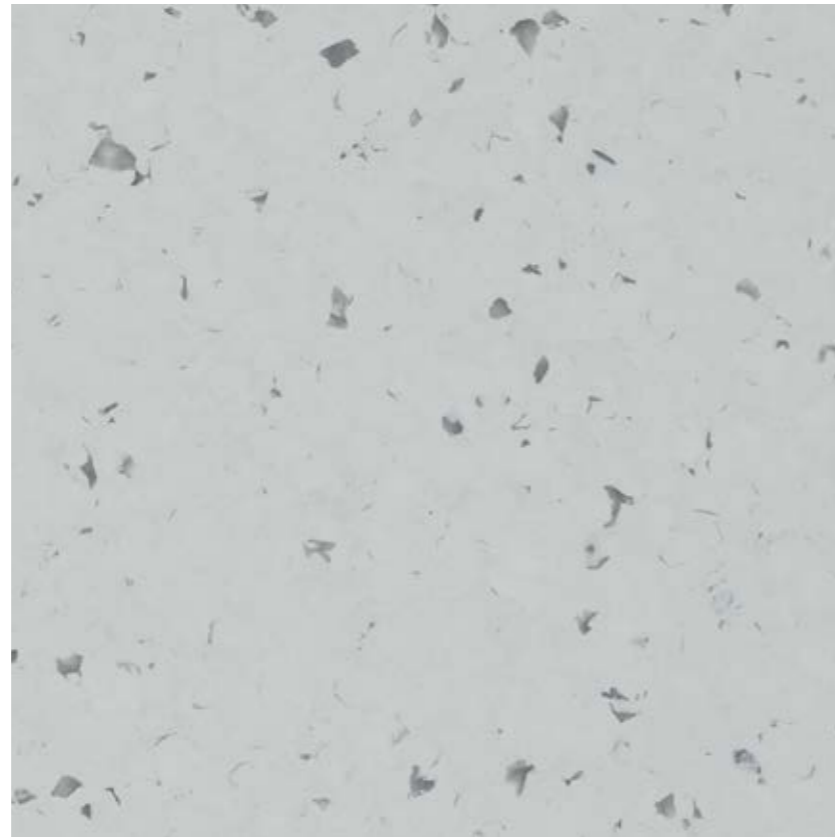


**5460 Lava Stone**  
NCS: 7502-B / LRV: 6.5

EL5



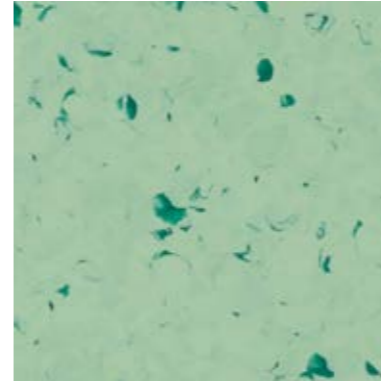
**5409 Pebble Beach**  
NCS: 2002-R50B / LRV: 53.4



**5411 Atlantic Grey**  
NCS: 2500-N / LRV: 49.1

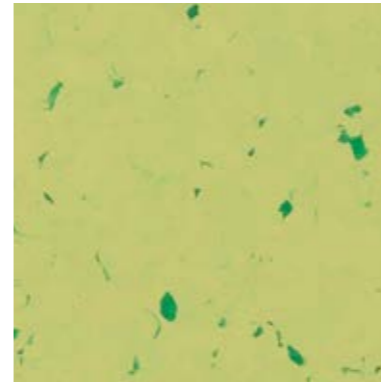


**5408 Chalk Dust**  
NCS: 1500-N / LRV: 65.8

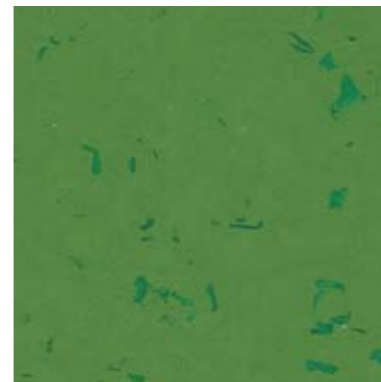


**5417 Foggy Hill**  
NCS: 2020-G20Y / LRV: 39.4

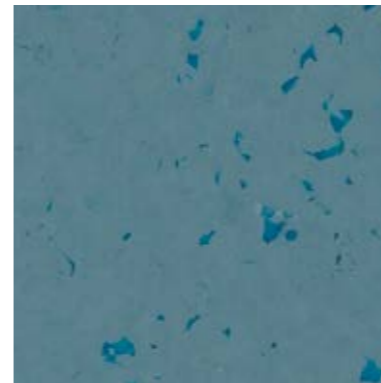
EL5



**5427 Green Zest**  
NCS: 2030-G80Y / LRV: 45.3

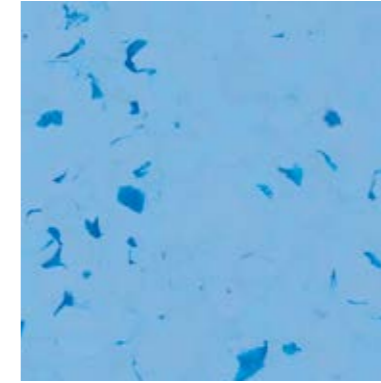


**5447 Aventurine**  
NCS: 4040-G30Y / LRV: 17.1



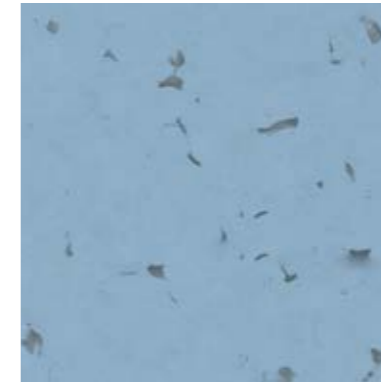
**5466 Rocky Blue**  
NCS: 5020-B10G / LRV: 16.9

EL7



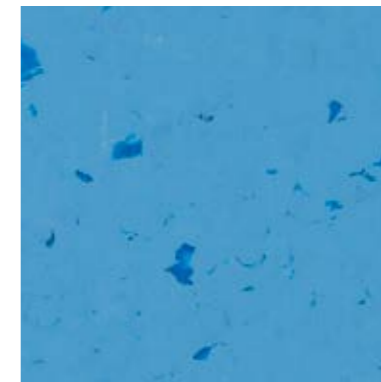
**5426 Shadow**  
NCS: 2040-R90B / LRV: 35.5

EL5

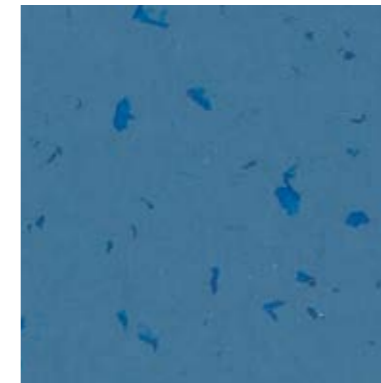


**5416 Acquamarina**  
NCS: 3020-R90B / LRV: 33.2

EL7



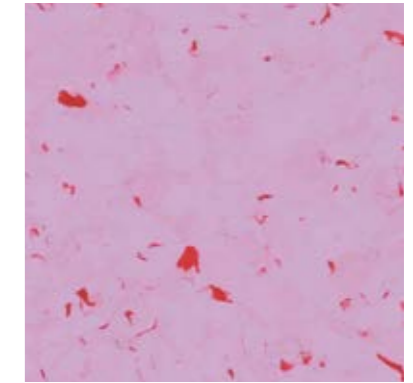
**5436 Tiger Eye**  
NCS: 2050-R90B / LRV: 24.5



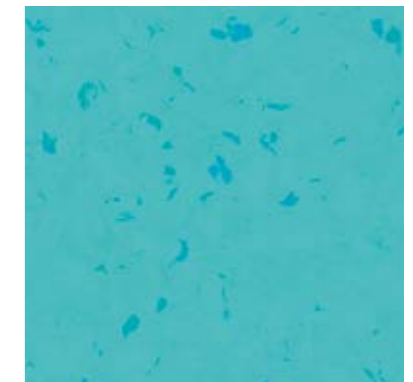
**5446 Blue Nug**  
NCS: 5030-R90B / LRV: 13.5



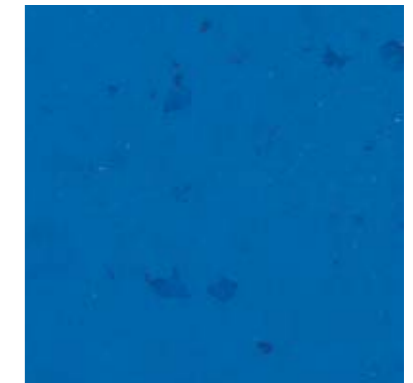
**5406 Moqui**  
NCS: 1515-R90B / LRV: 52.1



**5482 Sugar Drip**  
NCS: 2030-R40B / LRV: 34.8



**5437 Reef Water**  
NCS: 1050-B40G / LRV: 42



**5456 Intense Indigo**  
NCS: 3050-R80B / LRV: 12



\* Information sur le niveau d'émission de substances volatiles dans l'air intérieur, présentant un risque de toxicité par inhalation, sur une échelle de classe allant de A+ (très faibles émissions) à C (fortes émissions)




Mipolam Planet	Mipolam BioPlanet	Mipolam Planet R10	Mipolam EL7	Mipolam EL5
----------------	-------------------	--------------------	-------------	-------------

## DESCRIPTION

Property	EN ISO 24346	mm	2.00	2.00	2.00	2.00	2.00
Total thickness / Epaisseur totale	EN ISO 24346	mm	2.00	2.00	2.00	2.00	2.00
Weight / Poids	EN ISO 23997	g/sq.m	2700	2700	2700	3100	2985
Width of sheet / Largeur des lés	EN ISO 24341	cm	200	200	200	200	200
Length of sheet / Longueur des lés	EN ISO 24341	lm	20	20	20	20	20

## CLASSIFICATION

Norm/product specification / Norme / Spécification produit	-	-	EN ISO 10581	EN ISO 10581	EN ISO 10581	EN ISO 10581	EN ISO 10581
European classification / Classement européen	EN ISO 10874	class / classe	34-43	34-43	34-43	34-43	34-43
Classement UPEC	-	class / classe	Pour pose dans des locaux classés U4P3E2/3C2	Pour pose dans des locaux classés U4P3E2/3C2	-	Pour pose dans des locaux classés U4P3E2/3C2	Pour pose dans des locaux classés U4P3E2/3C2
Certification  UPEC (evaluation.cstb.fr)	QB 30	n° certif.	Demande en cours n° 21.4009	Demande en cours n° 21.4009	-	332-013-1	301-056-1
Fire rating / Réaction au feu	EN 13 501-1	class	Bfl-s1	Bfl-s1	Bfl-s1	Bfl-s1	Bfl-s1
Electrical resistance / Résistance électrique <sup>(1)</sup>	EN 1081	Ohm	-	-	-	10 <sup>4</sup> ≤ Rt ≤ 10 <sup>6</sup>	10 <sup>4</sup> ≤ Rt ≤ 10 <sup>6</sup>
Static electrical propensity / Potentiel de charge	EN 1815	kV	< 2	< 2	< 2	< 2	< 2
Slip resistance / Glissance	DIN 51130 / BGR 181	class / classe	R9	R9	R10	R9	R9








## PERFORMANCE

Type binder content / Teneur en agent liant	EN ISO 10581	type	I	I	I	II	I
Dimensional stability / Stabilité dimensionnelle	EN ISO 23999	%	sheet < 0.40	sheet < 0.40	sheet < 0.40	sheet < 0.40	sheet < 0.40
Dimensional stability (average measured value) / Stabilité dimensionnelle (valeur moyenne mesurée)	-	%	sheet ≈ 0.10	sheet ≈ 0.10	sheet = 0.10	sheet ≈ 0.10	sheet ≈ 0.10
Impact sound insulation / Isolation acoustique aux bruits de choc	EN ISO 717-2	dB	5	5	5	5	5
Residual indentation (norm) / Poinçonnement statique rémanent (norme)	EN ISO 24343-1	mm	≤ 0.10	≤ 0.10	≤ 0.10	≤ 0.10	≤ 0.10
Residual indentation (average measured value) / Poinçonnement statique rémanent (valeur moyenne mesurée)	-	mm	~ 0.02	~ 0.02	~ 0.02	~ 0.02	~ 0.02
Castor chair test (type H) / Essai de la chaise à roulettes (type H)	ISO 4918	-	OK	OK	OK	OK	OK
Decontamination / Décontamination	ISO 8690	-	Excellent	Excellent	Excellent	Excellent	Excellent
Watertightness / Etanchéité	EN 13553	Annex A	Pass	Pass	Pass	-	-
Thermal conductivity / Conductivité thermique	EN ISO 10456	W/(m.K)	0.25	0.25	0.25	0.25	0.25
Colour fastness / Solidité lumière	EN 20 105 - B02	degree / degré	≥ 7	≥ 7	≥ 7	≥ 6	≥ 6
Surface treatment / Traitement de surface	-	-	Evercare™	Evercare™	Evercare™	Evercare™	Evercare™
Chemical resistance / Résistance aux produits chimiques <sup>(2)</sup>	EN ISO 26987	class / classe	OK	OK	OK	OK	OK
Anti-bacterial activity (E. coli - S. aureus - MRSA) / Activité anti-bactérienne (E. coli - S. aureus - MRSA) <sup>(3)</sup>	ISO 22196	-	> 99 % inhibits growth / ne favorise pas la prolifération				
Anti-viral activity (human coronavirus 229E) / Activité Anti-virale (Coronavirus humain)	ISO 21702	-	99.7% after 2h / 99,7% après 2h 99.9% after 5h / 99,9 % après 5h				

## ENVIRONMENT / INDOOR AIR QUALITY / ENVIRONNEMENT / QUALITE DE L'AIR

TVOC after 28 days / TCOV après 28 j	ISO 16000-6	microgramms / m <sup>3</sup>	< 10	< 10	< 10	< 10	< 10
Certification / Certification	-	-	Floorscore®	Floorscore®	Floorscore®	Floorscore®	Floorscore®

## CE MARKING / MARQUAGE CE


	EN 14041	-					
	-	-					

(1) Measured before installation / Mesuré avant installation

(2) Stain resistance results on gerflor.com / Données de Résistance aux taches sur gerflor.fr


(3) The implementation of an effective cleaning method is the best defence against infection / Le respect des protocoles d'entretien des sols est la meilleure garantie contre les infections.

Product descriptions, installation and Maintenance Guidelines, available on Gerflor.com

 Rubber leaves indelible stains on vinyl floorings: do not use mats with rubber backing and replace tubular furniture feet with those made of PVC or polyamide. Place mats of sufficient length at entrances to reduce outside sources of dirt.

**IMPORTANT:** The information contained in this document is valid from 15/04/2021 and is subject to change at any time without notice. In the context of constantly changing technology, our customers are responsible, prior to any use, for checking with us that this document is the version in force.

Modèles de descriptifs, principes de mise en oeuvre et méthodes d'entretien sur gerflor.fr

 Proscrire tout élément ou partie d'éléments en caoutchouc susceptible d'être en contact direct avec nos revêtements (embouts de chaises, mobiliers...) et utiliser exclusivement des embouts en PVC ou Polyéthylène. Pour les matériaux EVERCARE™, ne jamais effectuer de décapage avec les disques abrasifs (vert, marron ou noir) ou des procédés risquant de détériorer le traitement de surface (abrasifs, solvant...).

**IMPORTANT:** Les informations contenues dans ce document sont valables à compter du 15/04/2021 et susceptibles d'être modifiées sans préavis. L'évolution de la technique étant permanente, il appartient à notre clientèle, avant toute mise en oeuvre, de vérifier auprès de nos services que le présent document est bien celui en vigueur.

## WE CARE | WE ACT. Our Commitments for a Sustainable future



**CARBON FOOTPRINT\***

-20 % kg CO<sub>2</sub> equivalent/m<sup>2</sup> between 2020 and 2025



**BIOSOURCED CONTENT\*\*\***

10 % by 2025



**RECYCLED CONTENT**

30 % by 2025



**ADHESIVE FREE\*\***

35 % by 2025



**ANNUAL VOLUME RECYCLED**

60 000 t by 2025

\* Scopes 1 and 2 defined in the GHG protocol \*\*\* % of activity with biosourced materials \*\* % of activity - adhesive free solution

**Gerflor**  
the flooring group