

Discover linoleum,
LOVE MARMOLEUM

creating better environments

Forbo
FLOORING SYSTEMS



MAGNIFICENT MARMOLEUM

Marmoleum is Forbo's brand for Linoleum floor covering. Linoleum is a specific and very special category with the so-called resilient floor covering industry. What makes linoleum different is that it is made from natural raw materials and that the product has a wide range of characteristics that is not found with any other floor covering. In this booklet we want to inspire you with our Marmoleum offer and explain why this floor covering is one that deserves a place in your next project.



CONTENT

THE MARMOLEUM STORY	4	COLLECTIONS	
		Marmoleum Marbled	28
		Marmoleum Solid	34
SEGMENTS	14	Marmoleum Linear	40
		Marmoleum Modular	44
Office	16	Marmoleum Click	50
Healthcare	18	Bulletin Sport	51
Retail	20	Furniture Linoleum	52
Education	22	Bulletin Board	53
Leisure, hospitality and public domain	24	Special flooring solutions	54
At home	26	Great looking seams	62
		The finishing touch	63

TECHNICAL INFORMATION

Technical tables	64
Collection overviews	68

THIS IS **WHERE WE GROW** MARMOLEUM

Making Marmoleum is a truly fascinating journey, one that starts here on the flax fields in Europe and Asia. Flax is a versatile plant that produces fibers and seeds that serve as raw materials in various industries. For linoleum we press linseed oil out of the seeds and use it as a main ingredient for our Marmoleum floors. What remains of the seed is used as animal feeding. Flax is an annual crop and can be harvested as long as the sun shines and rain falls, as such it is the most sustainable start of any floor covering you could wish for.



PURE NATURE



Linseed oil pressed from the seeds of the flax plant, we use ...

pine tree rosin



rosin from pine trees which together with the linseed oil is heated and creates a linoleum paste mix. To this we add finely grinded upcycled wood such as the branches, trunks and roots of the trees harvested in the certified forestry industry. We call this material wood flour.



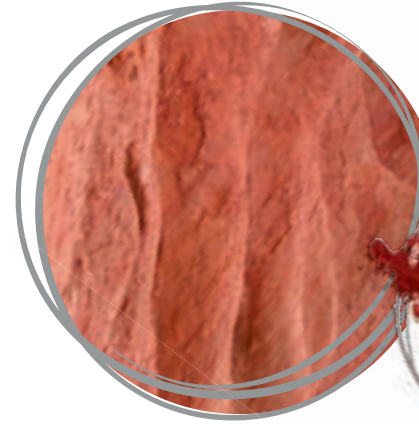
wood flour

Limestone is a fourth element which is added to the linoleum paste mix and the wood flour to create linoleum granules.

limestone



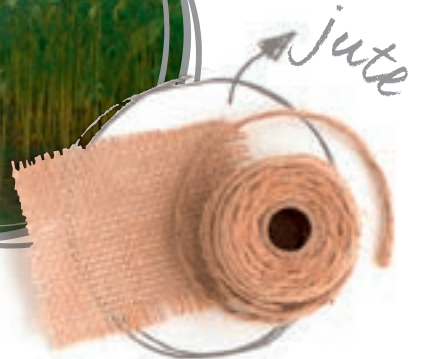
Organic pigments and natural iron oxide take care of the coloration of the granules.



pigment



The fibres from the jute plant are used for the jute mesh carrier on which linoleum is calandered.



jute



THE ART OF MANUFACTURING MARMOLEUM

The craft of making Marmoleum originates from the century before last. Making linoleum literally was a handmade and manmade process, one in which the mixing, maturing and calandering of the raw materials was a trade mastered by few.

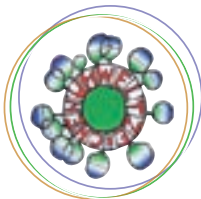
Forbo has been a driving force in developing the linoleum production process into a lean, automated and low energy consuming operation. We are proud of our experts as much as they take pride in creating every piece of Marmoleum.





DISCOVERING THE GREEN ROAD

Your environment benefits from using Marmoleum, not just because you are using a floor covering that is made from natural raw materials, which means that you are literally bringing nature inside, but you also benefit from a floor that is contributing to a healthy indoor environment with a floor that is hygienic and has natural anti-bacterial properties. Forbo's Marmoleum has been awarded with a large array of international environmental certificates such as the Nordic Swan, the Blue Angel and Nature Plus. In addition Marmoleum floor covering improves the environmental and well-being score in building ratings such as LEED, Breeam and the Well building standard.



A BONUS FOR THE ENVIRONMENT

There is one more good reason to take an interest in Marmoleum floor coverings for your indoor space. You are actually choosing a floor that is CO₂ neutral, by nature. The raw materials used for creating linoleum have absorbed such an amount of CO₂ during the time the plants, trees and crops matured, that this amount of CO₂ actually exceeds the amount of CO₂ that is emitted during the production process of the product. Each square meter of Marmoleum delivers a bonus to the environment and reduces CO₂ emissions.



CO₂ is absorbed in every annual crop of jute and flax plants that provide jute fibers and vegetable linseed oil.



We produce with 100% green electricity derived from the sun and wind, not adding any CO₂.



Our Marmoleum is produced in a modern energy efficient environment.



All this results in a CO₂ neutral, natural, circular floor covering product.



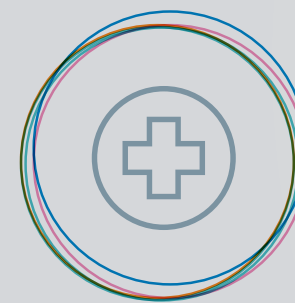
Pine trees, larch trees and the cork oak collect CO₂ during their life time and provide rosin, wood flour and cork granulate.

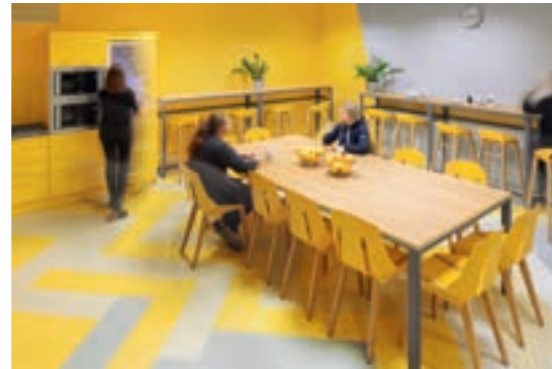




A MODERN **VERSATILE** CHAMPION

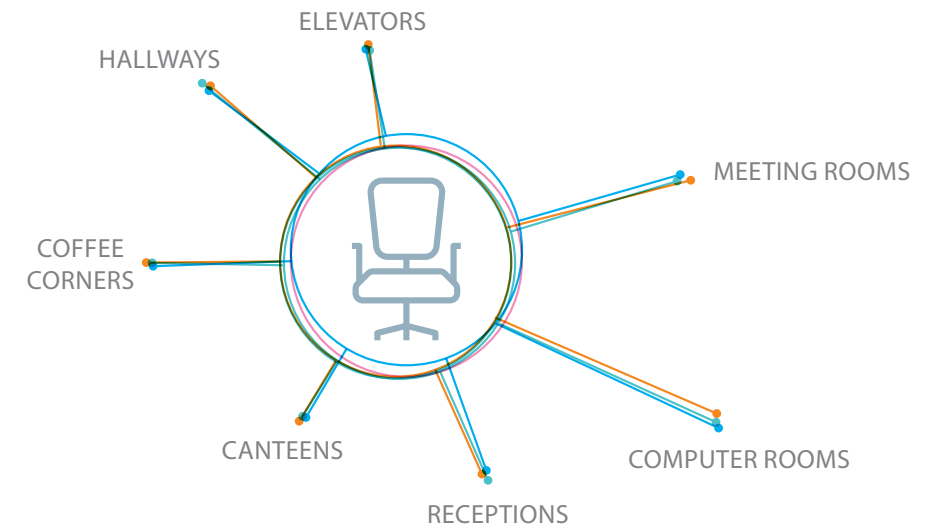
The heritage of linoleum stretches for over 150 years. Since its conception, linoleum floor coverings have been seen as a contemporary, functional and durable solution for both public and private spaces. At Forbo we have developed linoleum into the Marmoleum brand, designing and producing modern beautiful floor covering solutions in over 200 colorways and more than 15 different design structures, available as roll, tile or plank varieties. This allows Marmoleum to be a versatile champion not only for public spaces like in healthcare or education facilities but also a beautiful sustainable solution for commercial floors in retail, office, leisure and hospitality.





MARMOLEUM AND OFFICE SPACES

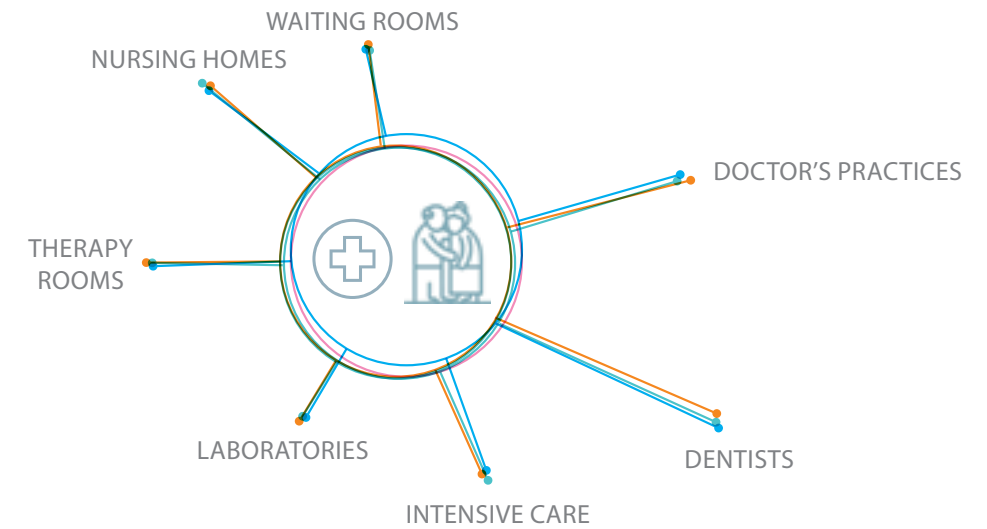
Natural light and color have entered the workspace, creating pleasing and creative surroundings. The Marmoleum ranges create serene and stylish environments that fit the modern office space. Matching linoleum Bulletin Board and Furniture Linoleum can provide modern and functional accents for an efficient working environment.

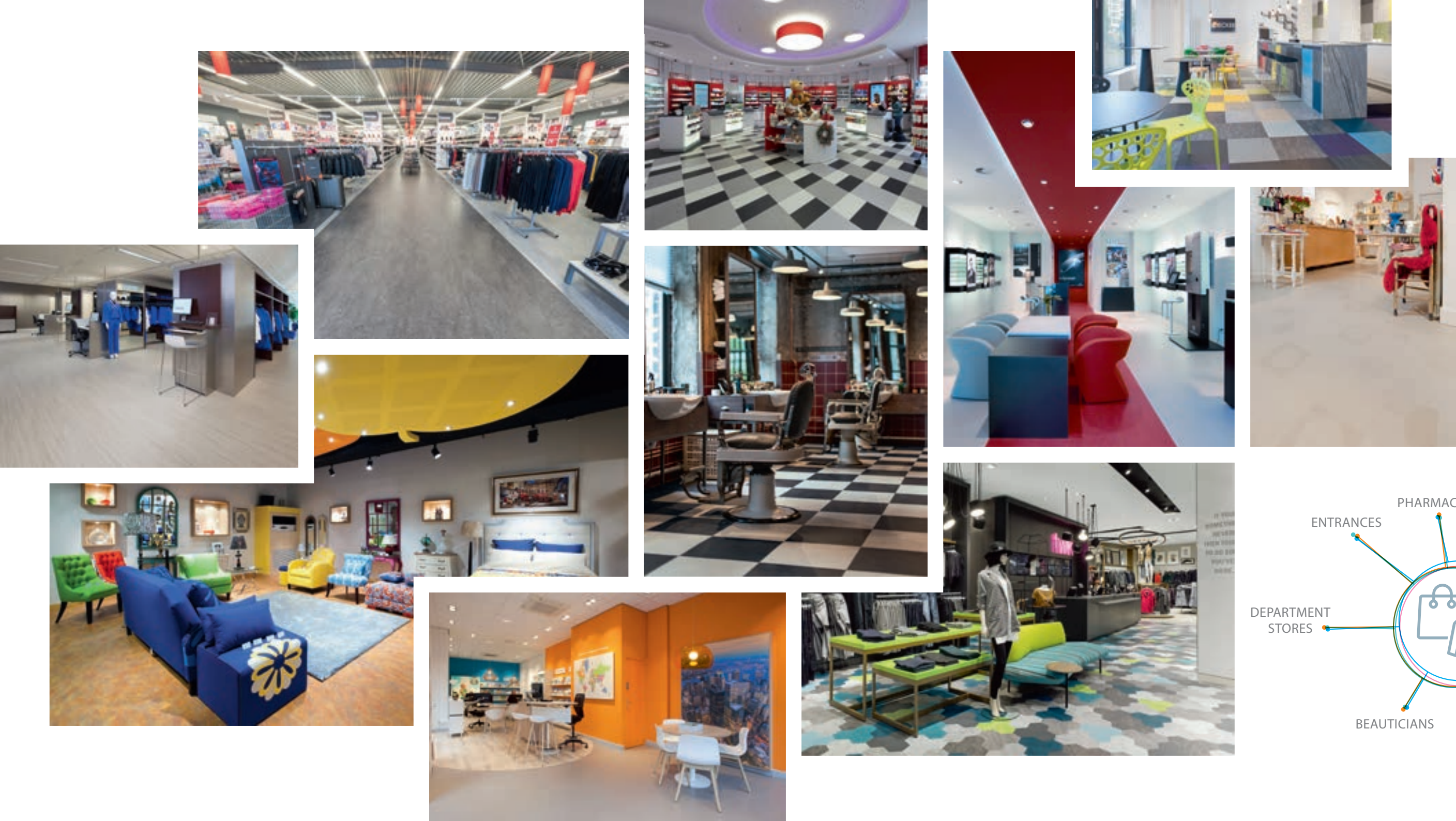




MARMOLEUM FOR HEALTHCARE AND CARE ENVIRONMENTS

To the present day Marmoleum is chosen as the desired flooring solution for healthcare and care environments. Hospitals, private clinics, aged care facilities and assisted living environments all benefit from using Marmoleum as a hygienic, natural bacteriostatic floor covering solution that is easy to clean and maintain as well as durable, safe and comfortable for both wheeled and foot traffic.

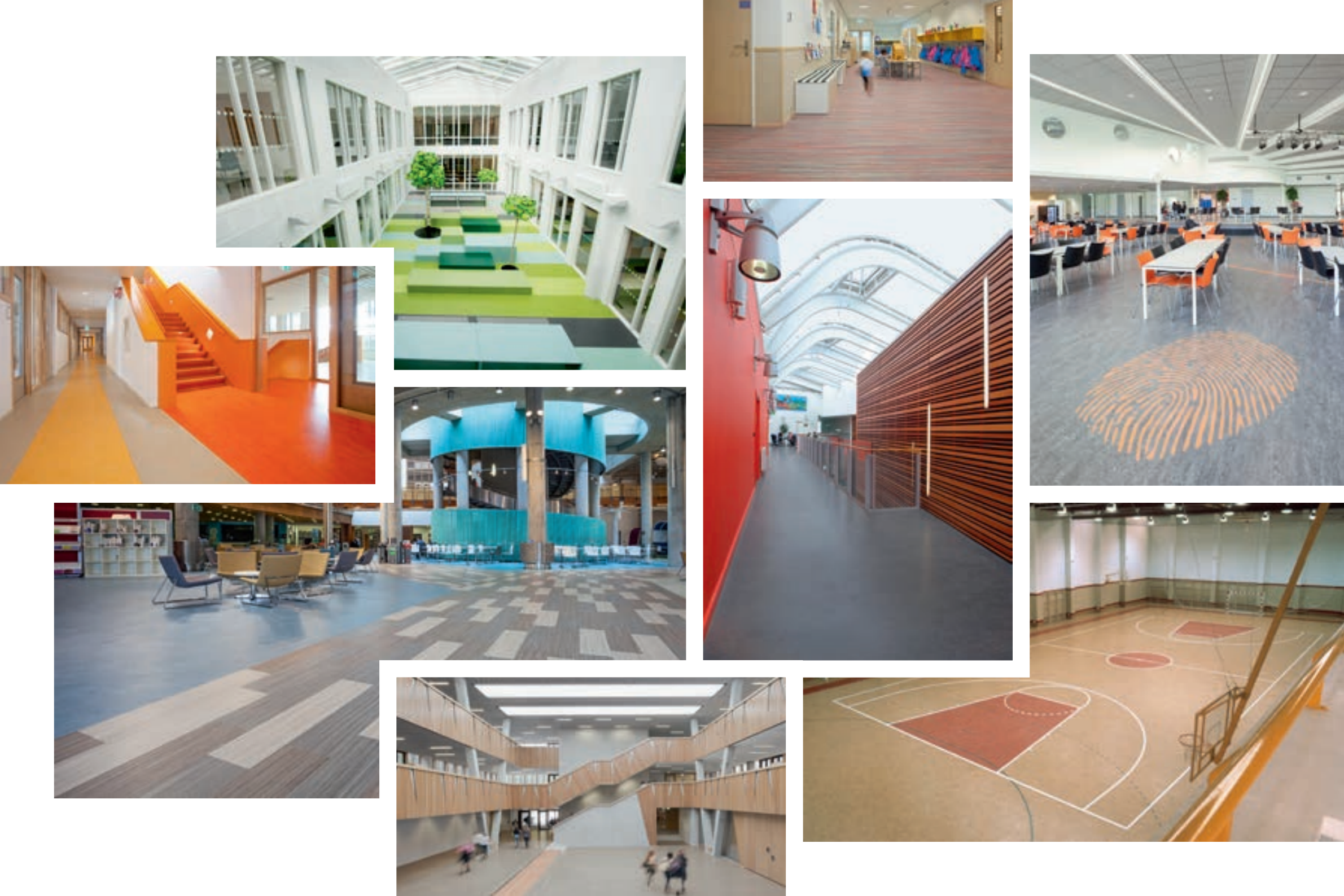




MARMOLEUM AND THE RETAIL ENVIRONMENT

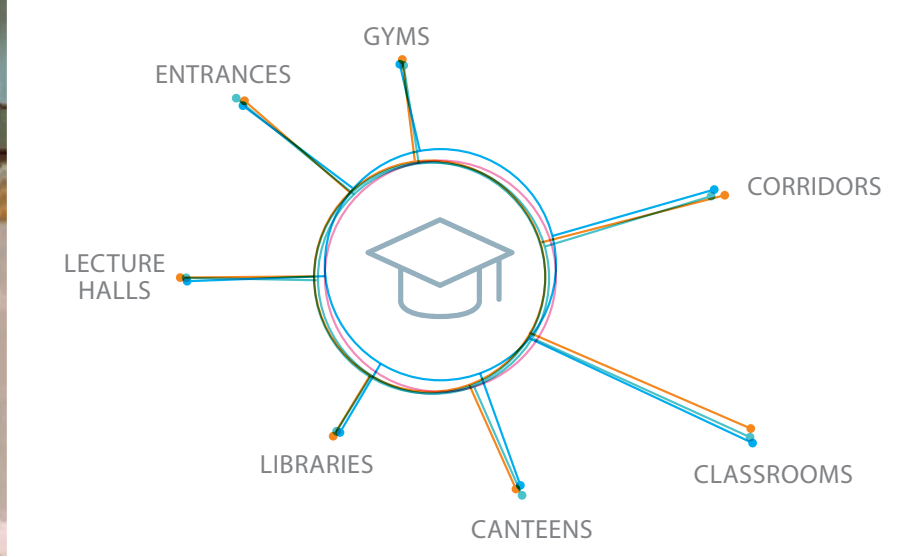
Marmoleum floors help create an exceptional brand and shopping experience. The vast array of colors and design options enhance the brand experience without compromising on the practical and functional demands of the high traffic retail environment, one that supports the sustainable footprint of the brand.





MARMOLEUM CARING FOR YOUR EDUCATION

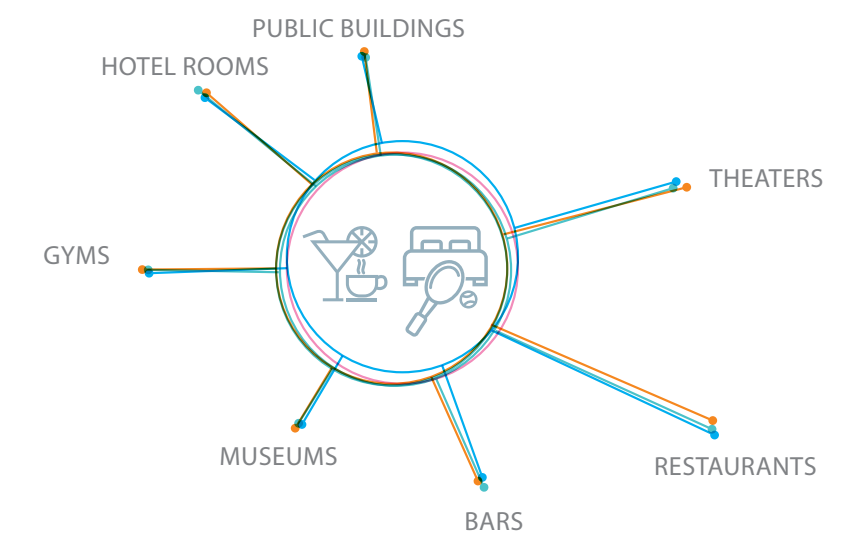
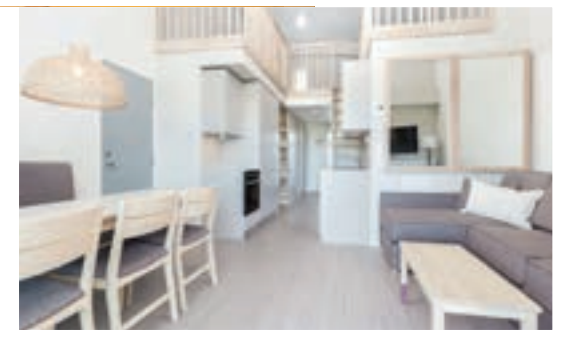
From a child's first footsteps in a nursery or kindergarten right through to their primary and secondary education all the way to university, Marmoleum floor covering will follow them, whether in their class room, auditorium, sports hall or faculty library, providing solid, durable and hygienic floor covering as the basis for their education.





MARMOLEUM IN LEISURE, HOSPITALITY AND THE PUBLIC DOMAIN

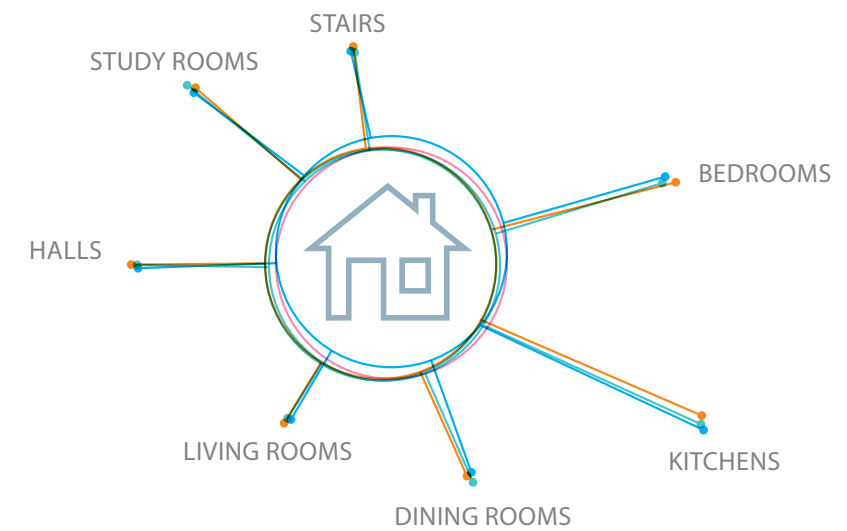
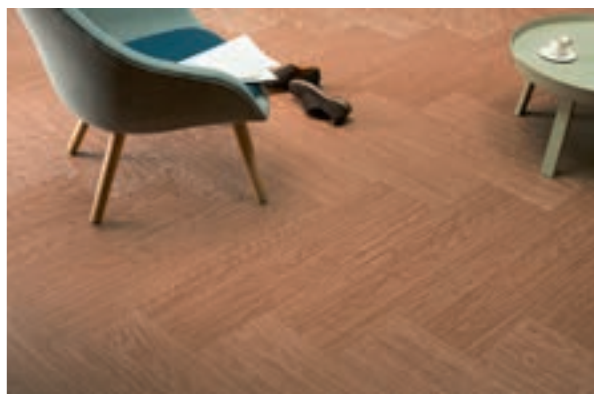
Everywhere where people meet, work, relax and play Marmoleum floor covering provides solutions for all those who are looking for a durable and sustainable floor covering that is easy to clean and maintain. The wide choice in collections, colors and designs in the Marmoleum ranges ensures that there is a fitting floor for every occasion.





MARMOLEUM AT HOME

Marmoleum floors follow domestic trends where not only nature is brought inside but where solid neutral uni-colors in concrete and wood designs provide a basis for modern interiors. Suitable for underfloor heating and easy in use, Marmoleum also is a perfect hassle-free solution for the home environment.





MARMOLEUM **MARbled** DEFINING NATURAL SPACES

The Marmoleum Marbled collection provides the largest color bank in resilient flooring, a beautiful arrays of structures and designs that connects the colours of the indoor space, and at the same time keeping a low profile. There are 5 marbled designs in this collection; they are:

Fresco

A strong palette of tone in tone colours creating a fresh, delicate and balanced aesthetic with a soft contrast and a refined marbled structure.

Real

The 'royal' classic blend of carefully selected colours, developed to create choice and mixes of colour ranging from warm neutrals to calm greys as well as exiting brights and fashion shades.

Terra

A new design with a close and highly contrasting structure inspired by ingenious rock types. It creates a sophisticated small scale marble with great soil hiding properties in an authentic colour mix.

Vivace

Marmoleums' most liveliest and most outspoken blend made with six to eight colours to create a chameleon floor that adapts well to a multitude of interiors.

Splash

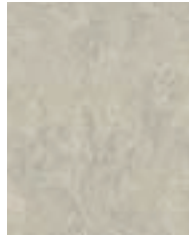
A new definition of a marbled design where the individual colours are playfully scattered over the floor delivering a slight nuance of colour where ever you look.

marmoleum® marbled

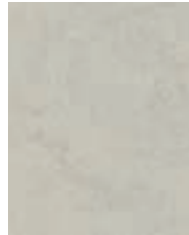
marmoleum® marbled



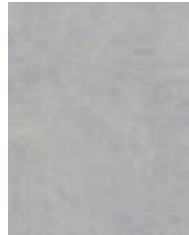
3257 | edelweiss | f



3136 | concrete | r



3860 | silver shadow | f



3883 | moonstone | f



3032 | mist grey | r



2621 | dove grey | r



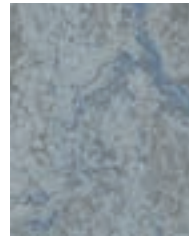
3146 | serene grey | r



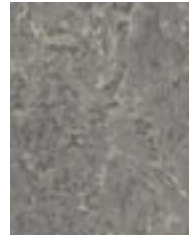
3889 | cinder | f



3428 | seashell | s



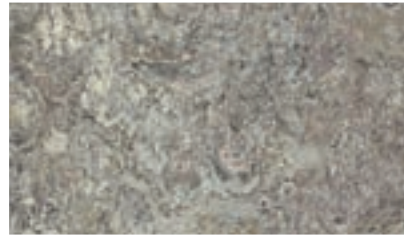
3053 | dove blue | r



2629 | eiger | r



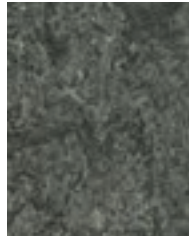
5802 | alpine mist | t



3420 | surprising storm | v



3405 | Granada | v



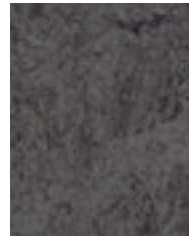
3048 | graphite | r



3866 | eternity | f



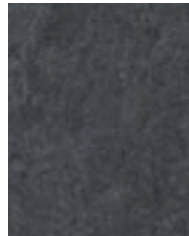
3137 | slate grey | r



3139 | lava | f



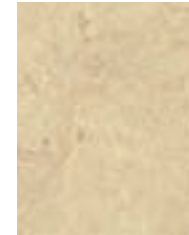
2939 | black | f



3872 | volcanic ash | f



3421 | oyster mountain | v



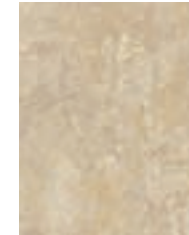
2713 | calico | r



3120 | rosato | r



3858 | Barbados | f



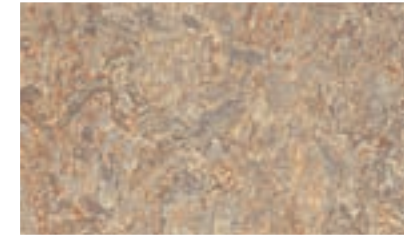
2499 | sand | r



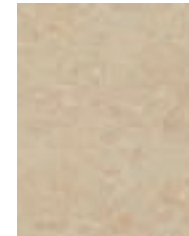
3038 | Caribbean | r



3075 | shell | r



3407 | donkey island | v



3861 | Arabian pearl | f



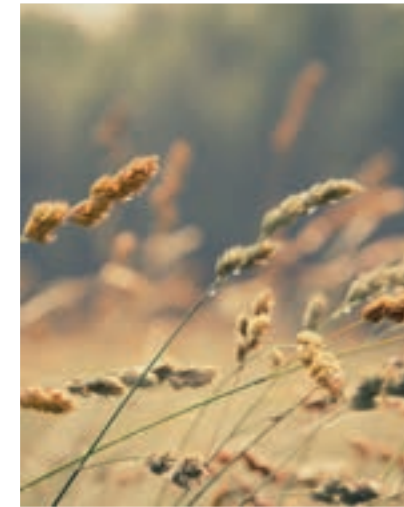
3141 | Himalaya | r



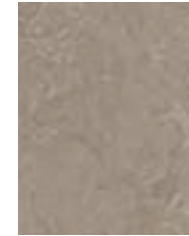
5803 | weathered sand | t



3433 | rockpool | s



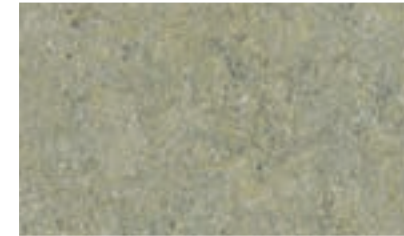
3232 | horse roan | r



3252 | sparrow | f



5804 | pink granite | t



5801 | river bank | t



3890 | oat | f



3234 | forest ground | r



3427 | agate | v



3246 | shrike | f



3254 | clay | f



3874 | walnut | f



3236 | dark bistre | r



3426 | cork tree | v



3233 | shitake | r

r = real f = fresco v = vivace s = splash t = terra

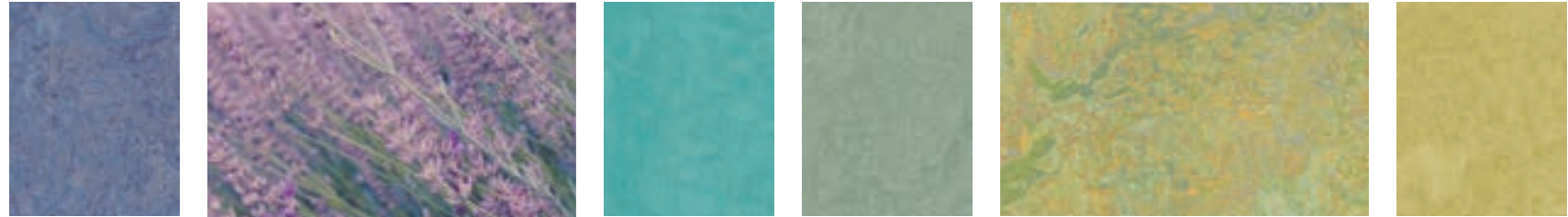
marmoleum® marbled



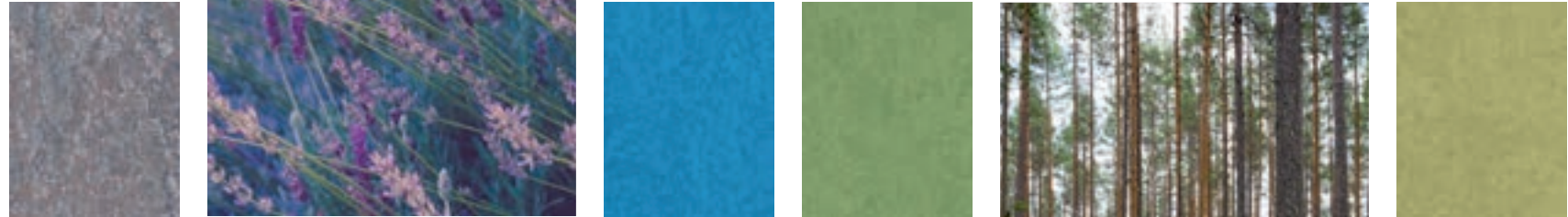
3828 | blue heaven | f 3219 | spa | r 3267 | aqua | f 3430 | salsa verde | s 3881 | green wellness | r



3266 | lilac | f 3429 | bluemoon | s 3224 | chartreuse | r 3885 | spring buds | f



3270 | violet | r 3269 | turquoise | f 3891 | sage | f 3413 | green melody | v 3259 | mustard | f

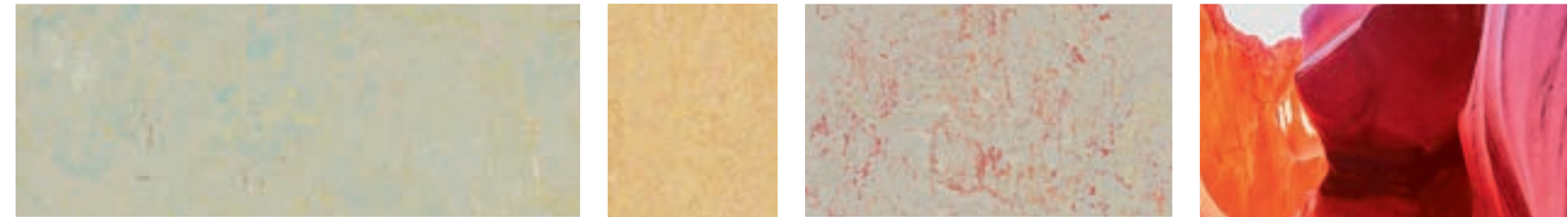


3123 | arabesque | r 3264 | Greek blue | f 3260 | leaf | f 3265 | avocado | f

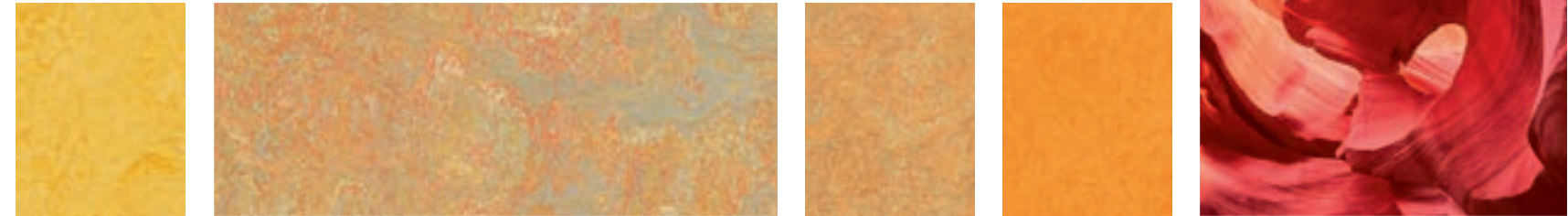


3055 | fresco blue | r 3030 | blue | r 3261 | marine | f 3271 | hunter green | f 3247 | green | f

r = real f = fresco v = vivace s = splash t = terra



3431 | limoncello | s 3846 | natural corn | f 3432 | fruit punch | s 3251 | lemon zest | f 3411 | sunny day | v 3847 | golden saffron | r 3262 | marigold | f



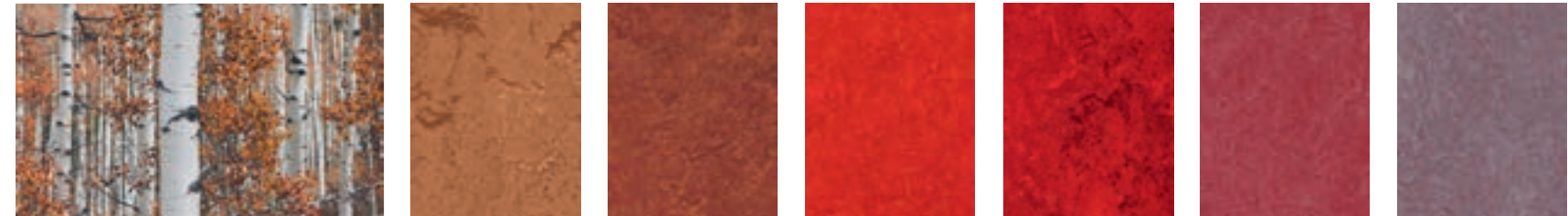
3225 | dandelion | r 3173 | Van Gogh | r 3825 | African desert | f 3126 | Kyoto | f 3263 | rose | f 3268 | honey suckle | r



3125 | golden sunset | f 3174 | Sahara | r 3403 | Asian tiger | v 3272 | plum | r



2767 | rust | r 3203 | henna | f 3131 | scarlet | f 3127 | Bleeckerstreet | r 3273 | ruby | f



3272 | plum | r



marmoleum® solid

MARMOLEUM **SOLID** DEFINING PURE SPACES

Marmoleum Solid is a collection of five distinctive individual textures that provide the foundation for creating pure distinctive modern spaces. This Marmoleum collection is often seen as the most modern display of what Linoleum is capable of. The Cocoa range in the Solid collection has been awarded with the iF Design award. The five designs of the solid collection are identified as:

Cocoa

A completely new concept of a range of five colors to which for each of them upcycled cocoa husk has been added creating a visual random effect in a plain unicolored surface.

Walton

Named after Frederic Walton, the inventor of linoleum, the Walton range is a series of classic and contemporary to modern solid uni colors that present linoleum in its purest form.

Piano

A tone in tone scattered design, which when installed presents itself like a uni color, but with incremental overtime visual retention. The collection is made with both neutral as well as accent colors that all combine very well within the range.

Concrete

A true to life series of concrete colors in modern warm and cool grey neutrals. The range is complemented by a series of 'shimmer an glow' colors that are subtly mixed in with the grey base.

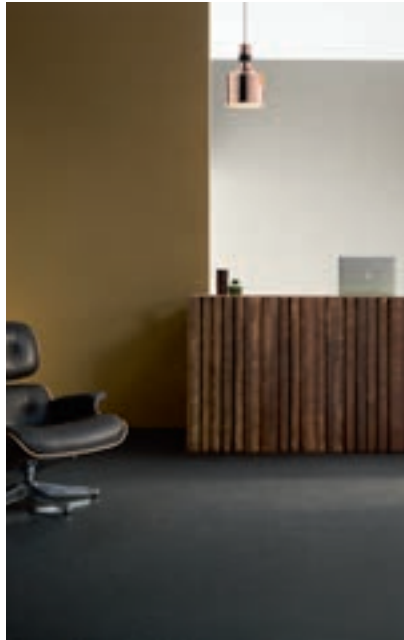
Slate

Inspired by the texture of natural slate stone bringing an extra dimension to the design. Marmoleum Slate offers five natural slate colors that come to life on your floor.

marmoleum® solid



e3746 | Newfoundland | s



e3747 | Lakeland shale | s



171 | cement | w



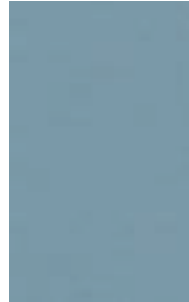
3369 | titanium | w



3370 | terracotta | w



3352 | Berlin red | w



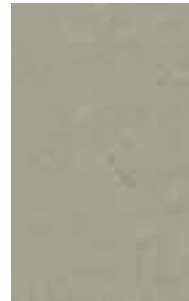
3360 | vintage blue | w



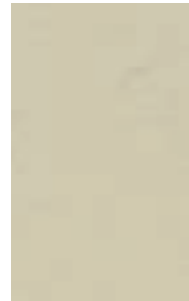
3358 | petrol | w



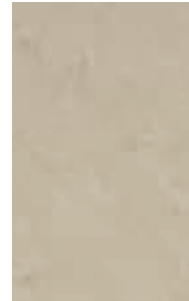
3706 | beton | c



3724 | orbit | c



3701 | moon | c



3711 | cloudy sand | c



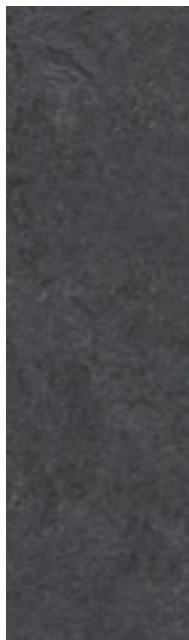
3726 | Venus | c



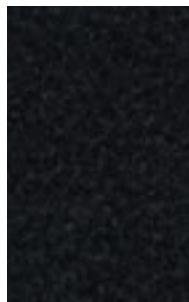
3584 | white chocolate | co



e3745 | Cornish grey | s



e3725 | Welsh slate | s



123 | black



173 | paving | w



186 | lead | w



3367 | alloy | w



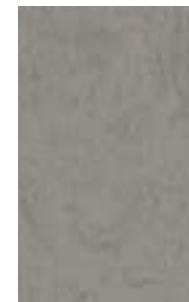
3355 | rosemary green | w



3359 | bottle green | w



3703 | comet | c



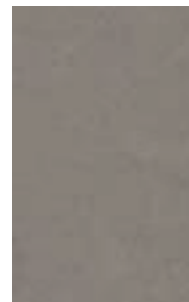
3704 | satellite | c



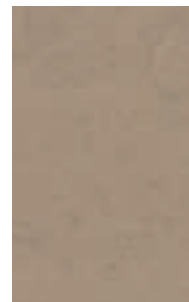
3731 | flux | c



3705 | meteorite | c



3702 | liquid clay | c



3727 | drift | c



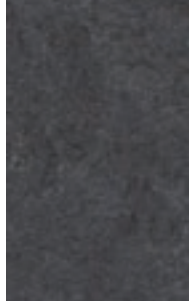
3580 | milk chocolate | co



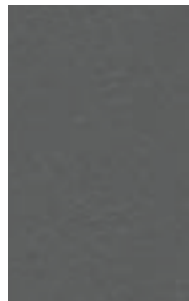
3582 | earl grey chocolate | co



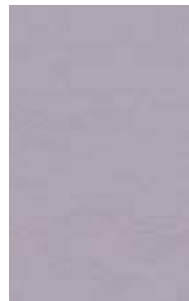
e3707 | Highland black | s



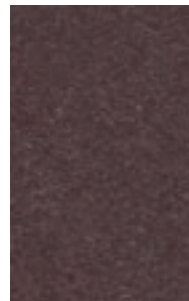
e3725 | Welsh slate | s



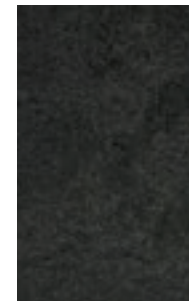
3368 | grey iron | w



3363 | lilac | w



3353 | eggplant purple | w



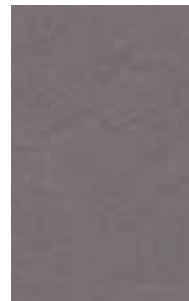
3707 | black hole | c



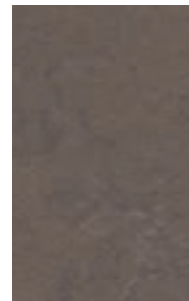
3725 | cosmos | c



3723 | nebula | c



3730 | Stella | c



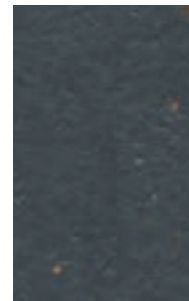
3568 | delta lace | c



3709 | silt | c



3581 | dark chocolate | co



3583 | chocolate blues | co

s = slate w = walton c = concrete co = cocoa p = piano

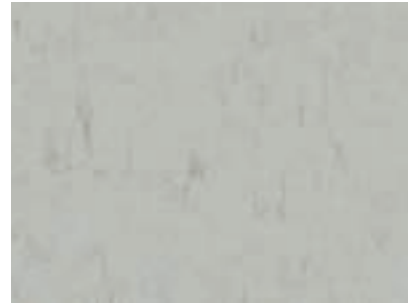
marmoleum® solid



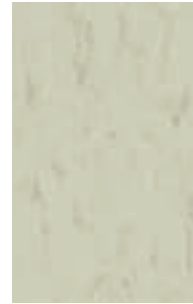
3634 | meadow | p



3642 | periwinkle | p



3629 | frosty grey | p



3650 | polar bear | p



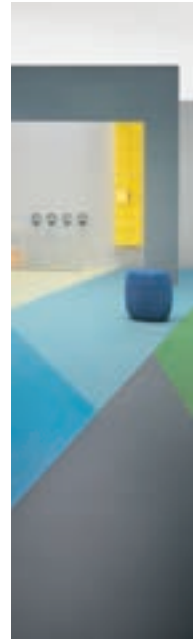
3648 | sunray | p



3646 | young grass | p



3644 | Nordic blue | p



3645 | Neptune blue | p



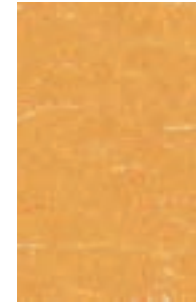
3601 | warm grey | p



3630 | angora | p



3651 | zinnia | p



3622 | mellow yellow | p



3647 | nettle green | p



3649 | greenwood | p



3607 | grey dusk | p



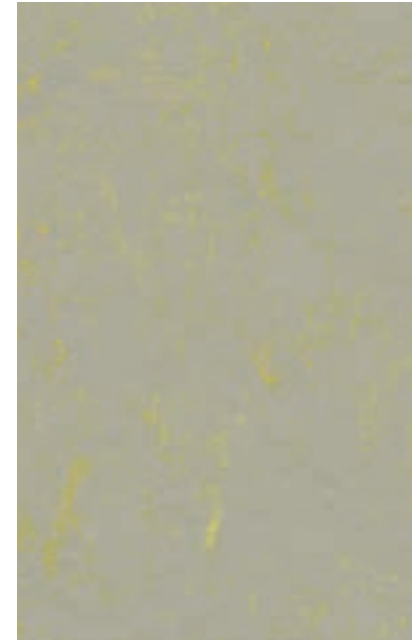
3631 | otter | p



3632 | sealion | p



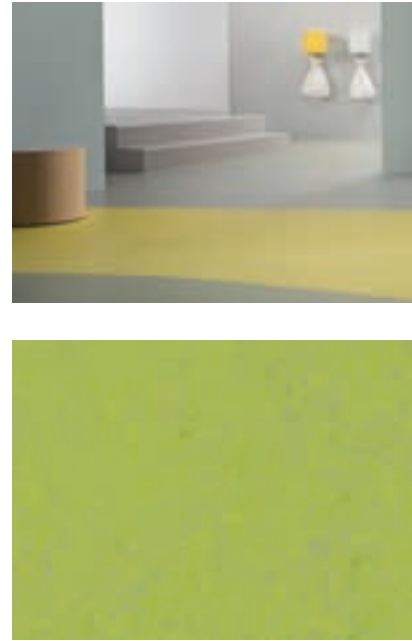
3625 | salsa red | p



3733 | yellow shimmer | c



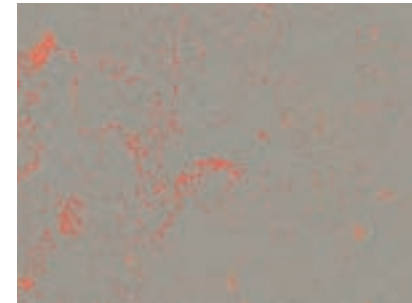
3741 | yellow glow | c



3742 | green glow | c



3736 | green shimmer | c



3712 | orange shimmer | c



3738 | orange glow | c



3739 | blue glow | c



3734 | blue shimmer | c



3737 | red shimmer | c



3743 | red glow | c



3740 | purple glow | c



3735 | purple shimmer | c

s = slate w = walton c = concrete co = cocoa p = piano



marmoleum® linear

MARMOLEUM **LINEAR** DEFINING SPACES

Under the brand name Marmoleum Striato this linear collection presents itself as a contemporary linear design of natural colors in wood and stone as well as some modern accent colors perfect for zoning.

Striato Textura

The original Striato wood designs have been enhanced with two exclusive embossing structures that follow the wood grain providing the linear design with an all over embossing structure.

Striato Original

The colors of natural wood and stone in shades of warm neutrals in fine nuances setting the stage for soft tone in tone floor designs with its random linear structure.

Striato Colour

This collection celebrates the lively and outspoken color pallet of Marmoleum and shows how floors can create visual accents in a space or to be used as zoning elements.

marmoleum® linear



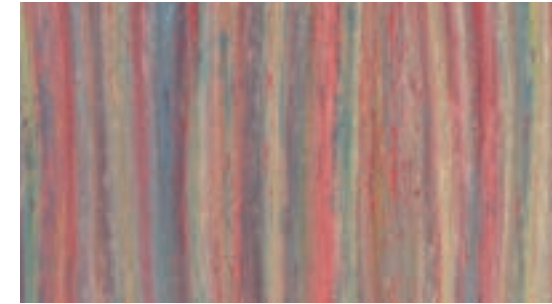
e5216 | Pacific beaches | st



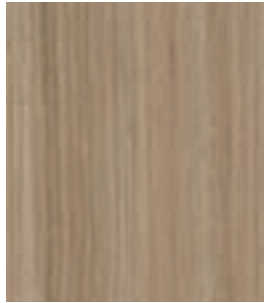
3575 | white cliffs | so



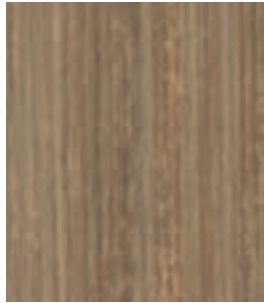
5216 | Pacific beaches | so



5221 | colour stream | sc



e5235 | North Sea coast | st



e5217 | withered prairie | st



e5236 | fox cub | st



5225 | compressed time | so



5230 | white wash | so



5216 | Pacific beaches | so



5238 | straw field | so



5241 | sunshine yellow | sc



5242 | red roses | sc



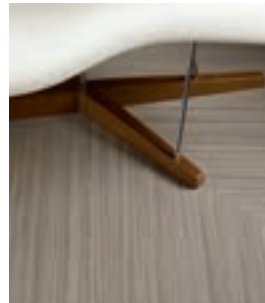
5243 | peacock blue | sc



e3573 | trace of nature | st



5232 | rocky ice | so



5217 | withered prairie | so



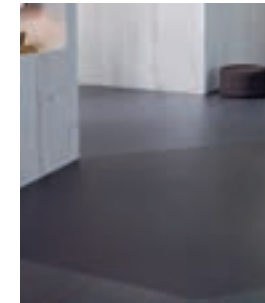
5218 | Welsh moor | so



5239 | oxidized copper | so



5244 | hint of yellow | sc



5245 | blue stroke | sc



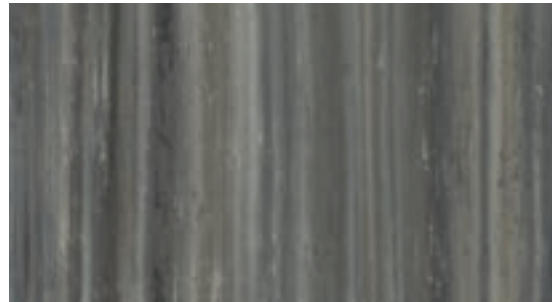
e5231 | Cliffs of Moher | st



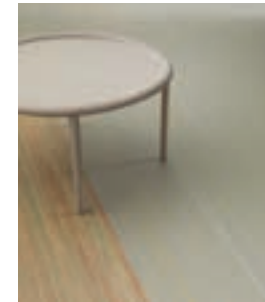
e5232 | rocky ice | st



3573 | trace of nature | so



5237 | black sheep | so



5240 | canyon shadow | so



5246 | orange highlights | sc



5247 | dark aura | sc

st = striato textura so = striato original sc= striato colour



marmoleum® modular

MODULAR MARMOLEUM CREATING YOUR OWN FLOOR

The planks and tiles in this collection are created around visual of wood, concrete, stone and marble with additional accent colors. The designs are featured in a range of color tones that be use to mix and match or on their own. The Slate and the Striato designs in this collection have been awarded with both the iF product award as well as with the Red Dot design award.

Lines

The colors of natural wood and stone in shades of warm and cool neutrals presented in a range of color tones that can be used on its own or combined to create a lively harmonious floor pattern of planks of 100x25 cm.

Lines Textura

The Striato Original wood designs have been enhanced with two exclusive embossing structures that follow the wood grain providing the linear design with a deeply embossed wood inspired structure, always varying per plank.

Slate

A very realistic random embossing of the Marmoleum offers four natural slate colors in 50x50 cm tiles that come to life on your floor.

Shade

A mixture of concrete and stone visuals that come as large 50x50 cm tiles or 25x50 cm brick format for creating realistic solid looking floor covering patterns

Marbled

A contemporary classic design of which the colors are created to mix and match, creating subtle nuances in the tile floor as it is being designed.

Colour

A traditional and classic Marmoleum tile offer which in this case is created to work on its own or to mix and match with other ranges of this Marmoleum Modular collection.